

# San Miguel County

Grace Franklin, Public Health Director

Presentation by West Central Public Health Partnership

Valeria Ayala Alonso, WCPHP Intern, MPH Candidate

Anabelle Faivre, WCPHP Intern, Bachelors Public Health Candidate

Margaret Wacker, MPH, WCPHP Coordinator

Erika Stoerkel, MPH, WCPHP Grants Coordinator

# Agenda

- 1 **Welcome**
- 2 **County Data Report**
- 3 **Key Informant Interview**
- 4 **Community Survey**
- 5 **Next steps**

# Regional Health Assessment Timeline

1

Secondary Data,  
Key Informant  
Interviews,  
Community  
Survey

2

Complete Health  
Assessment by  
December of  
2022

3

Prioritization  
Process: Winter  
2022/2023





**1**

**1 Minute per  
slide**

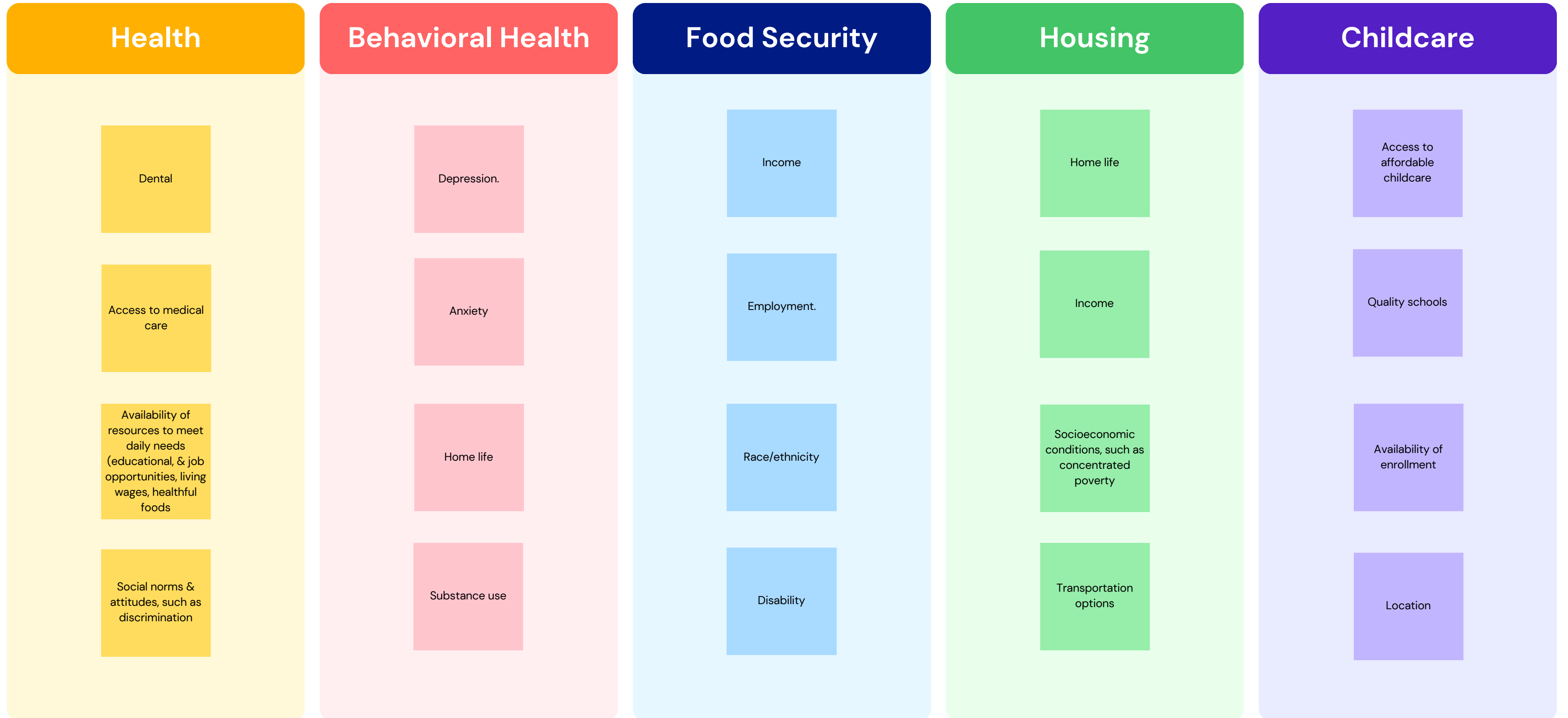
**2**

**Interactive  
Presentation**

**3**

**Ask questions**

# Framework



# Framework

## Health

Exposure to crime, violence, and social disorder, such as the presence of trash

Health Insurance

Aging

## Mental Health

Social support and social interactions

Aging

## Food Security

Population growth

Climate change

Increasing cost of food

## Housing

Public Safety

Residential segregation

Aging

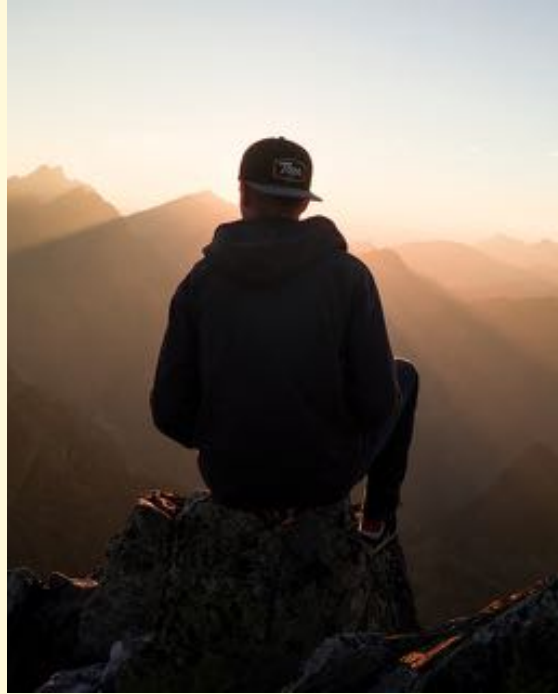
## Childcare

Safety

Planned learning activities

Socioemotional skills

**Availability of resources to meet daily needs**



**Social norms & attitudes, such as discrimination**



**Aging**

# Health

**Access to medical care**



**Dental**



**Exposure to crime, violence, and social disorder, such as the presence of trash**



**Health Insurance**





**Depression**



**Anxiety**



**Aging**

# Behavioral Health

**Home Life**



**Social Support  
and social  
interactions**



**Substance abuse**







**Income**



**Climate change**



**Disability**



**Race/Ethnicity**

# Food Security

**Employment**



**Increasing cost of food**



**Aging**



**Population growth**



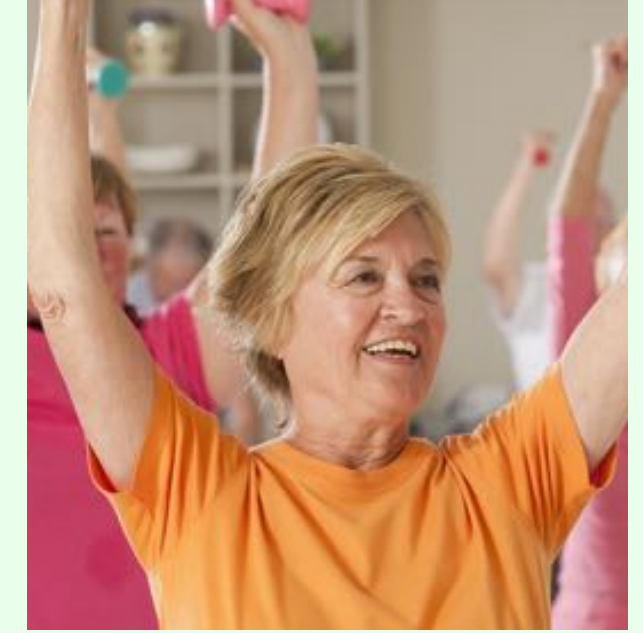
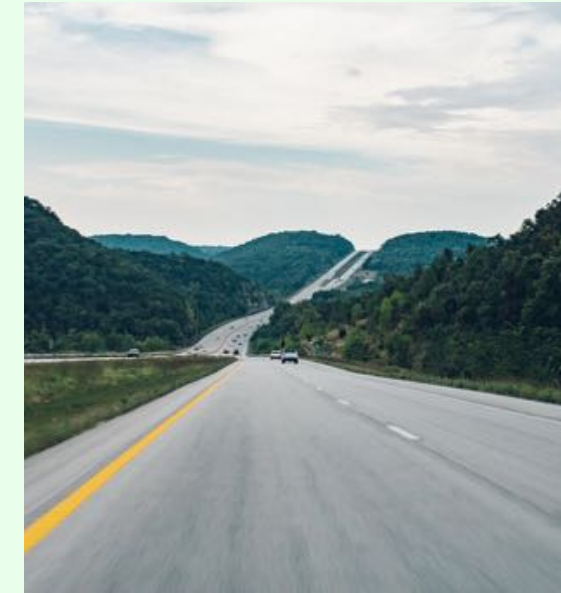


**Home life**



**Socioeconomic conditions**

**Transportation options**



**Aging**

**Residential Segregation**



# Housing

**Public Safety**



**Income**







**Affordable  
childcare**

**Location**



**Safety**

**Socioemotional  
skills**



**Quality schools**



# Childcare

**Availability of  
enrollment**



**Staff training**

**Planned learning  
activities**





# Data Sources



**State of Colorado**

**Colorado Health  
Indicators Dataset**

**Colorado Equity  
Compass**

**Community  
Commons**

**Colorado  
Children's  
Campaign**

**Kids Count**

# Data Considerations

**COVID-19 pandemic**

**Race/ethnicity**

**Less respondents**

**Online data sources**

# WCPHP Interest Areas



**Affordable &  
Healthy  
Housing**



**Behavioral &  
Mental Health**



**Affordability &  
Access to Care**



**Aging in Place  
(Older Adult  
Health)**



# San Miguel County Demographics

**Total Population**

**8,110**

**Population Change from 2010-2020**

↑ San Miguel County: 9.69%

↑ Colorado: 14.8%

Source: Data Source: US Census Bureau, American Community Survey. 2016-20.

# Demographics

**Total Population by Race/Ethnicity**

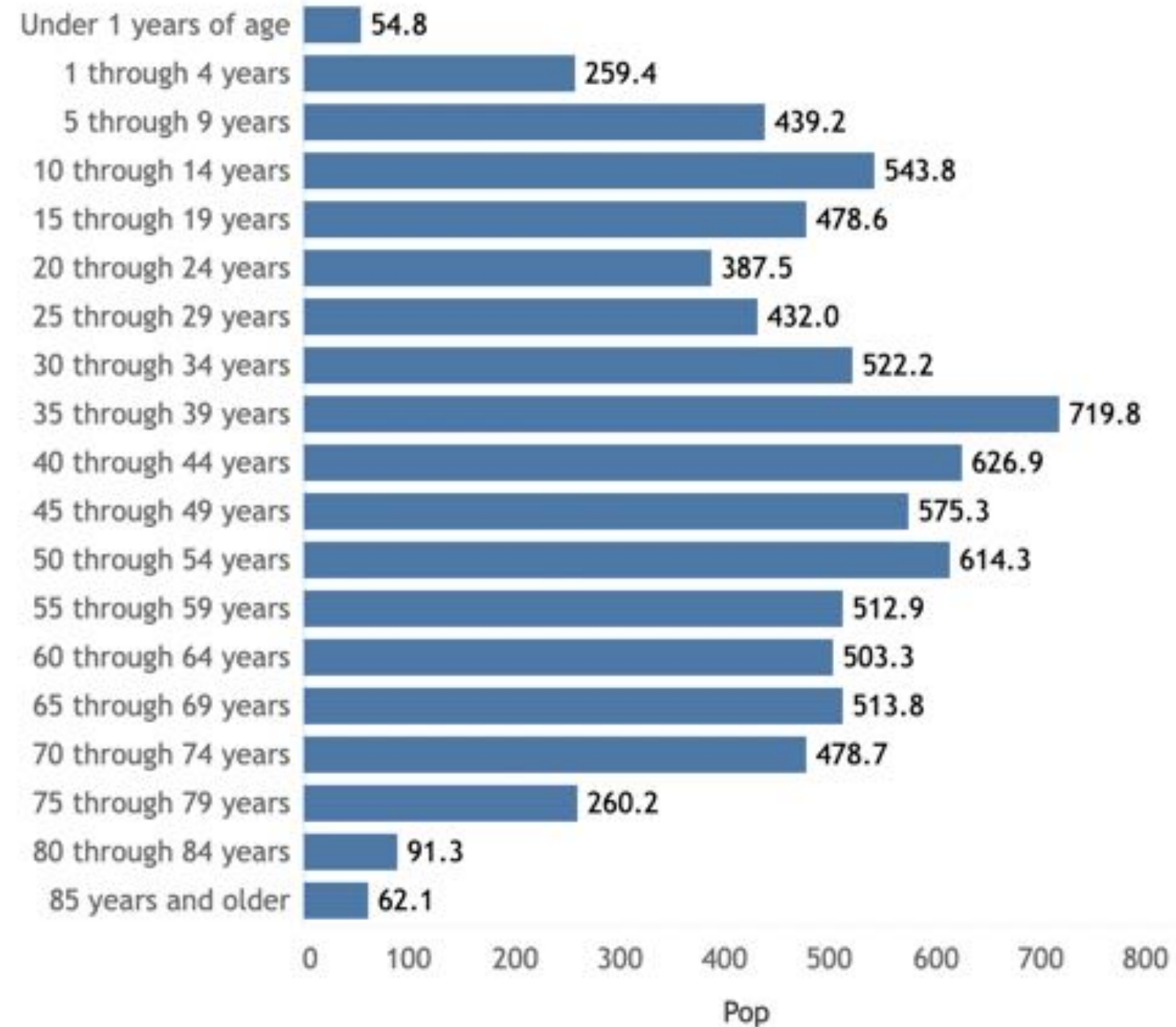
	Delta	Gunnison	Hinsdale	Montrose	Ouray	San Miguel	Colorado
Non-Hispanic White	80.81%	86.52%	86.43%	75.91%	93.19%	85.49%	67.50%
Non-Hispanic Black	0.65%	0.23%	1.66%	0.14%	1.55%	0.01%	3.94%
Non-Hispanic Asian	0.86%	0.38%	0.38%	0.82%	0.00%	1.39%	3.14%
Non-Hispanic Native American or Alaska Native	0.68%	1.03%	1.66%	1.15%	0.41%	0.95%	0.52%
Non-Hispanic Native Hawaiian or Pacific Islander	0.00%	0.00%	0.00%	0.13%	0.06%	0.00%	0.14%
Non-Hispanic Some Other Race	0.42%	0.13%	0.00%	0.02%	0.00%	0.21%	0.21%
Non-Hispanic Multiple Races	1.37%	2.16%	0.26%	1.24%	2.07%	1.04%	2.89%
Hispanic or Latino	15.23%	9.56%	9.60%	20.58%	2.72%	10.91%	21.66%

Source: Data Source: US Census Bureau, American Community Survey, 2016-20.

# Demographics

## San Miguel County Population by Age

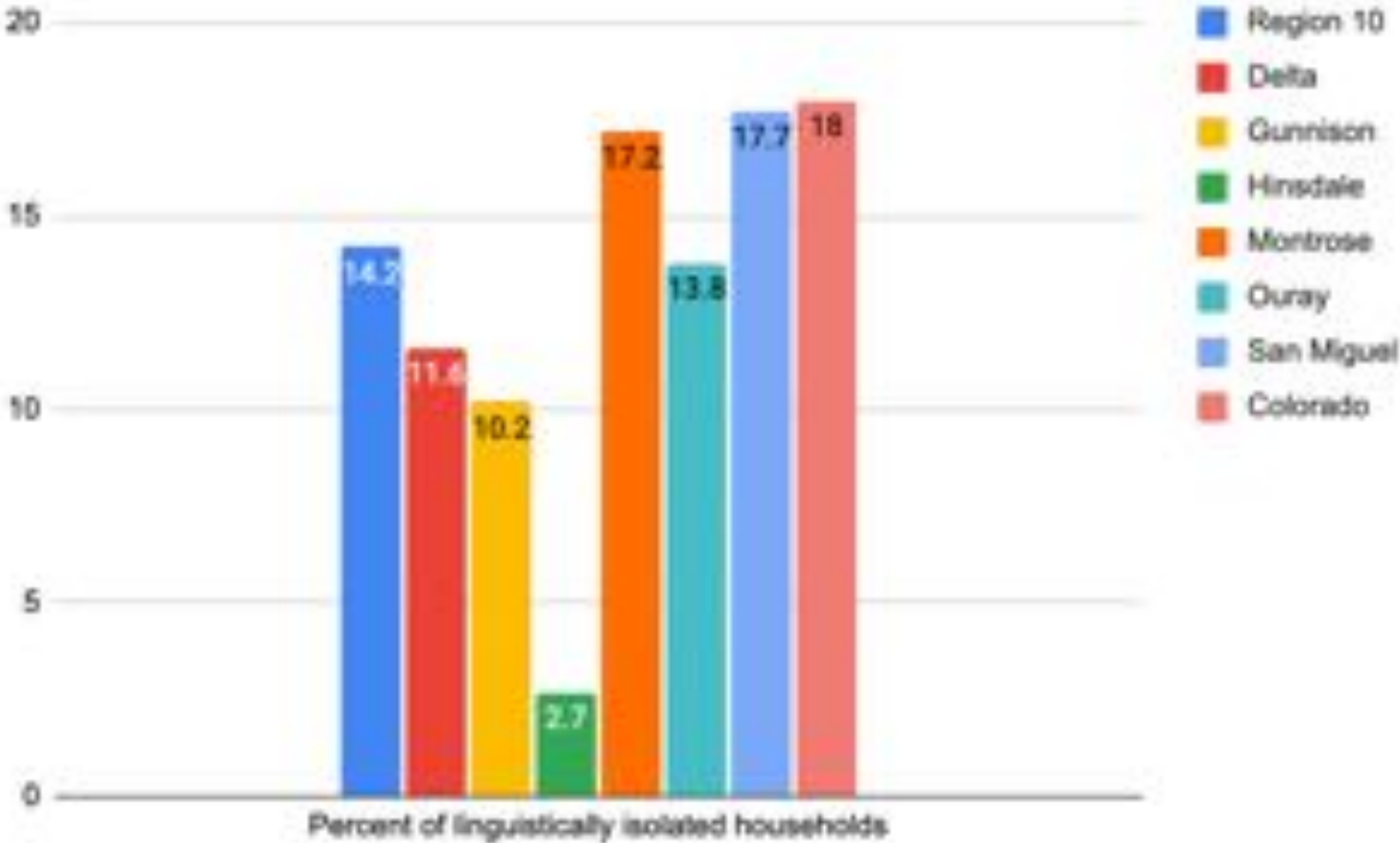
### Age Groups





# Demographics - San Miguel County

Percent of Linguistically Isolated Households



Source: US Census Bureau, American Community Survey, 2015-19.

A limited English-speaking household is one in which all members 14 years old and over have at least some difficulty with English.

<b>Region 10</b>	14.2% (11.7, 15.7)
<b>Delta</b>	11.6% (8.3, 14.9)
<b>Gunnison</b>	10.2% (6.2, 14.2)
<b>Hinsdale</b>	2.7% (0, 11.7)
<b>Montrose</b>	17.2% (14.5, 19.8)
<b>Ouray</b>	13.8% (7.5, 20)
<b>San Miguel</b>	17.7% (12.5, 22.9)
<b>Colorado</b>	18% (17.7, 18.3)

# San Miguel County Demographics

**Population Age 25+ with Bachelor's Degree or Higher, Percent**



**San Miguel County: 57.51%**  
**Higher** than the state (41.60%)

Source: US Census Bureau, American Community Survey. 2016-20.



**Population Age 25+ with No High School Diploma, Percent**



**San Miguel County: 2.35%**  
**Lower** than the state (7.92%)

Source: US Census Bureau, American Community Survey. 2016-20.

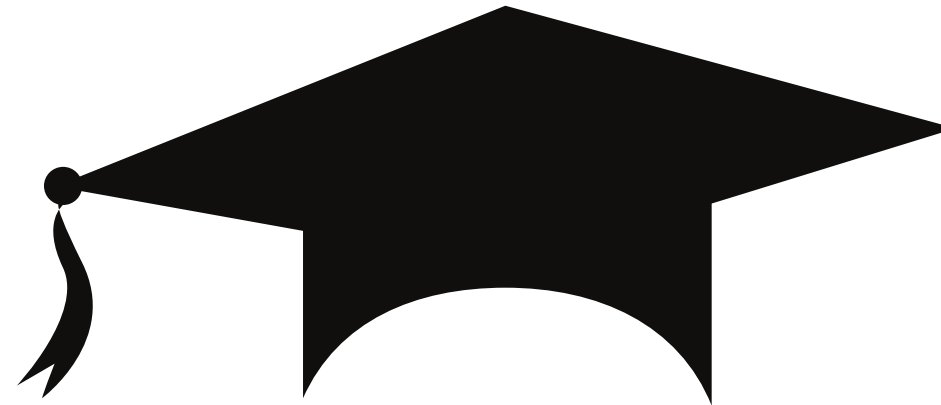
# San Miguel County Demographics

**Population Age 3-4 Enrolled in School, Percent**



San Miguel County: 72.92%  
**Higher** than the state (48.54%)

Source: US Census Bureau, American Community Survey. 2016-20.



**Graduation Rate**



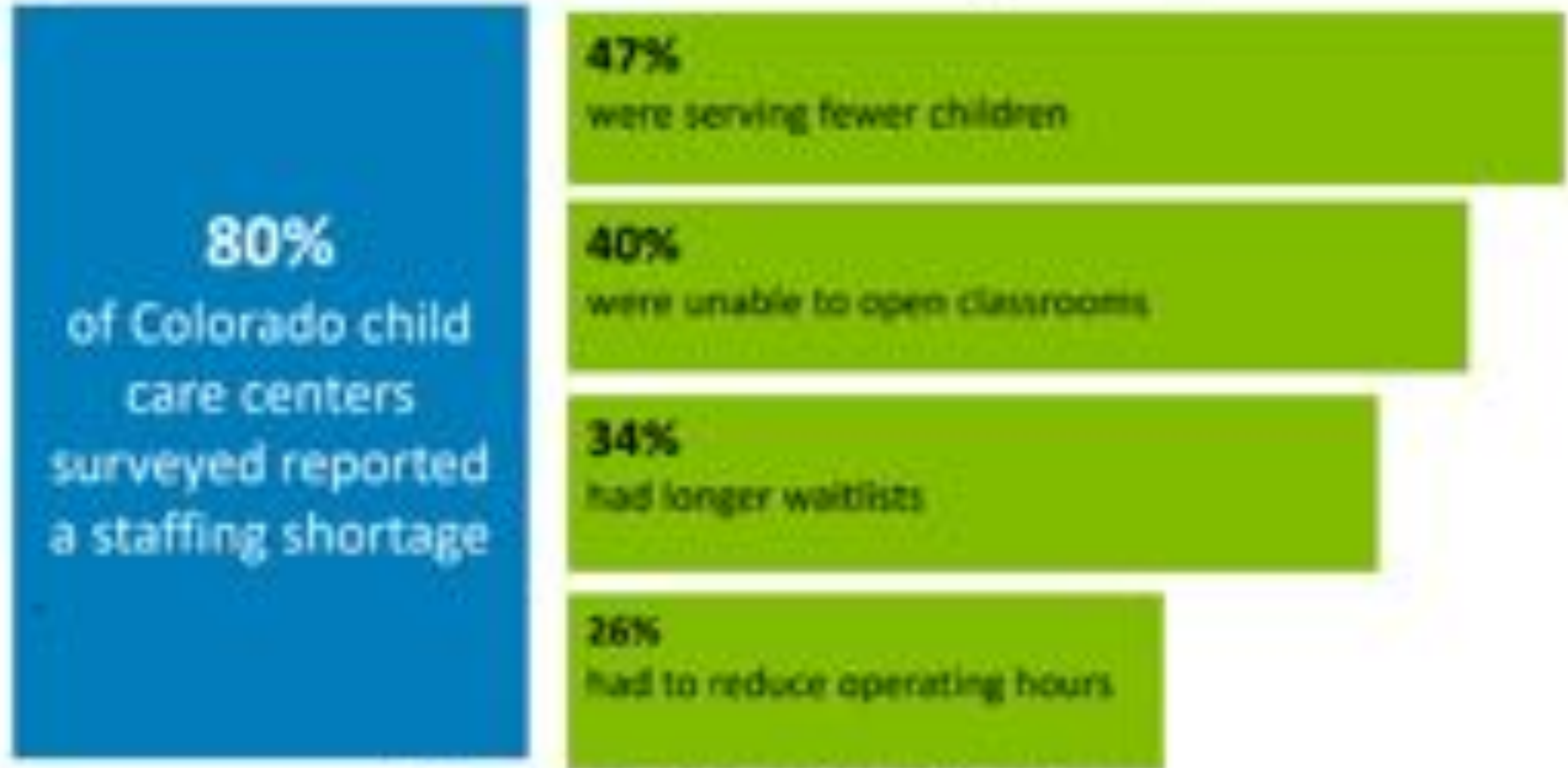
San Miguel County: 96.70%  
**Higher** than the state (81.70%)

Source: Data Source: US Department of Education, EDFacts. 2020-2021.

Colorado's child care system has long been under-resourced. The pandemic exacerbated existing workforce and affordability challenges.



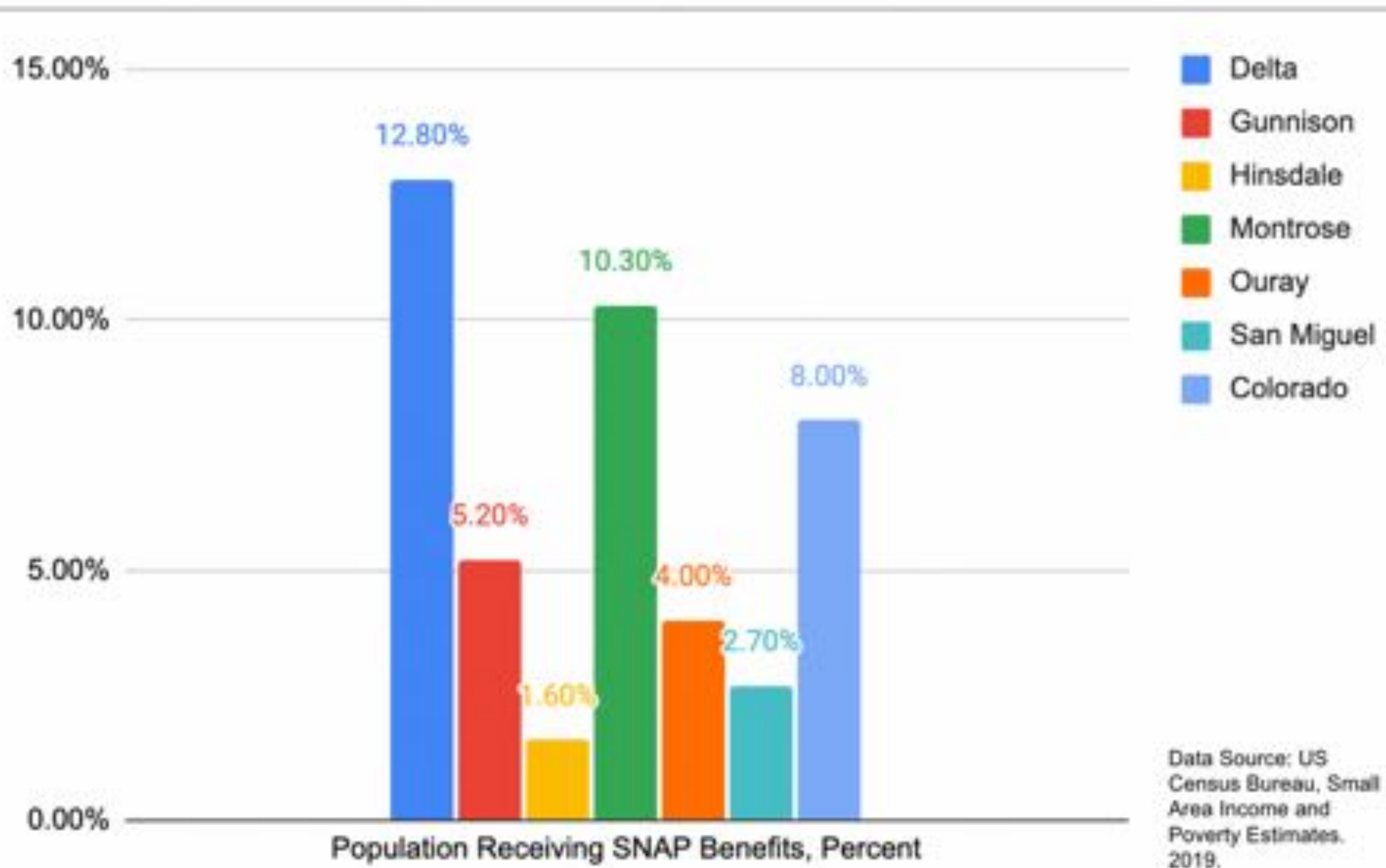
According to the National Association for the Education of Young Children, in mid-2021:



Source: National Association for the Education of Young Children, 2021.



# Socioeconomic Factors





# Socioeconomic Factors

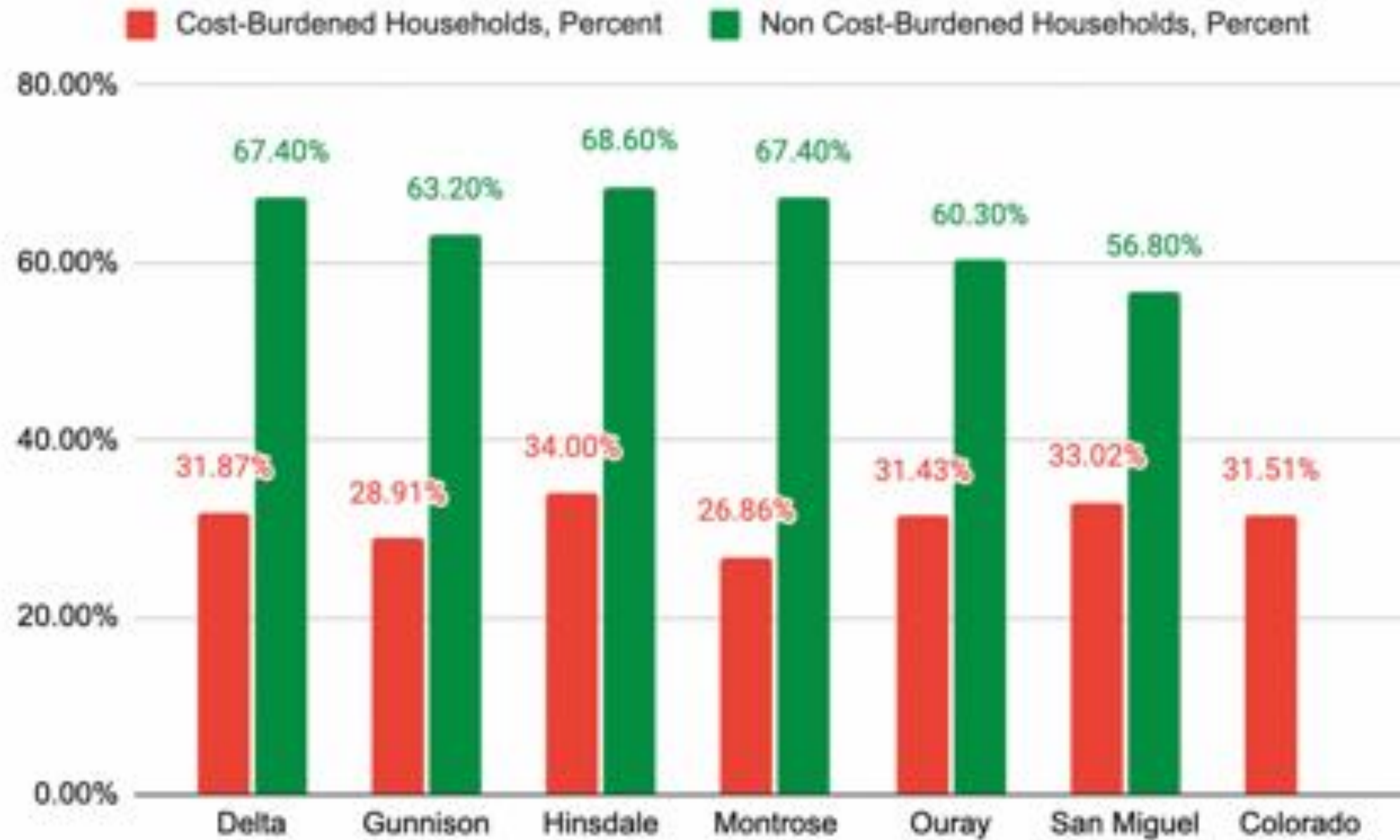
## Percent Change in Poverty Level

	Percent Change in Poverty Level
<b>Delta</b>	-5.40%
<b>Gunnison</b>	-0.60%
<b>Hinsdale</b>	-6.40%
<b>Montrose</b>	0.40%
<b>Ouray</b>	5.20%
<b>San Miguel</b>	-2.70%

Change in the percentage of households with incomes twice the federal poverty level from 2012 to 2017.

Source: Colorado Equity Compass

# Affordable/Healthy Housing



Source: US Census Bureau, American Community Survey, 2018-20.

# Affordable/Healthy Housing San Miguel County

Percent of renter-occupied housing units  
with gross rent 50% or greater of  
household income in the past 12 months



**San Miguel  
County: 27.2%**  
Colorado: 23%

Occupied Housing Units with One or  
More Substandard Conditions, Percent



**San Miguel  
County: 35.74%**  
Colorado: 31.9%

Data Source: US Census Bureau, American Community Survey. 2016-20.

Percent of renter-occupied  
housing units



**San Miguel  
County: 40.8%**  
Colorado: 32.5%



# Affordable/Healthy Housing

County	Housing Affordability
Delta	41.6%
Gunnison	48.9%
Hinsdale	34.8%
Montrose	45.3%
Ouray	32.7%
San Miguel	43.8%

This is the percentage of housing that is affordable for median income households. Having higher housing affordability is associated with more positive health outcomes.

Source: Colorado Equity Compass

# Behavioral/Mental Health

## San Miguel County

### Adult Current Smokers\*

Age Adjusted



**11.8%**

Colorado 13.9%

Source: BRFSS, SparkMap\*

2019

### Excessive Drinking\*



**20%**

Colorado 20%

Source: BRFSS, SparkMap\*

2019

### No Leisure Time Activity\*

Light moderate physical activity



**17.7%**

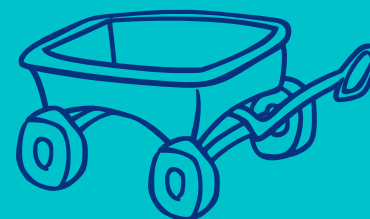
Colorado 16.4%

Source: BRFSS, SparkMap\*

2019

### Child Maltreatment Rate

Physical abuse, sexual abuse, emotional abuse and/or neglect



**0.6 per 100,000**

Colorado 9.7 per 100,000

2019

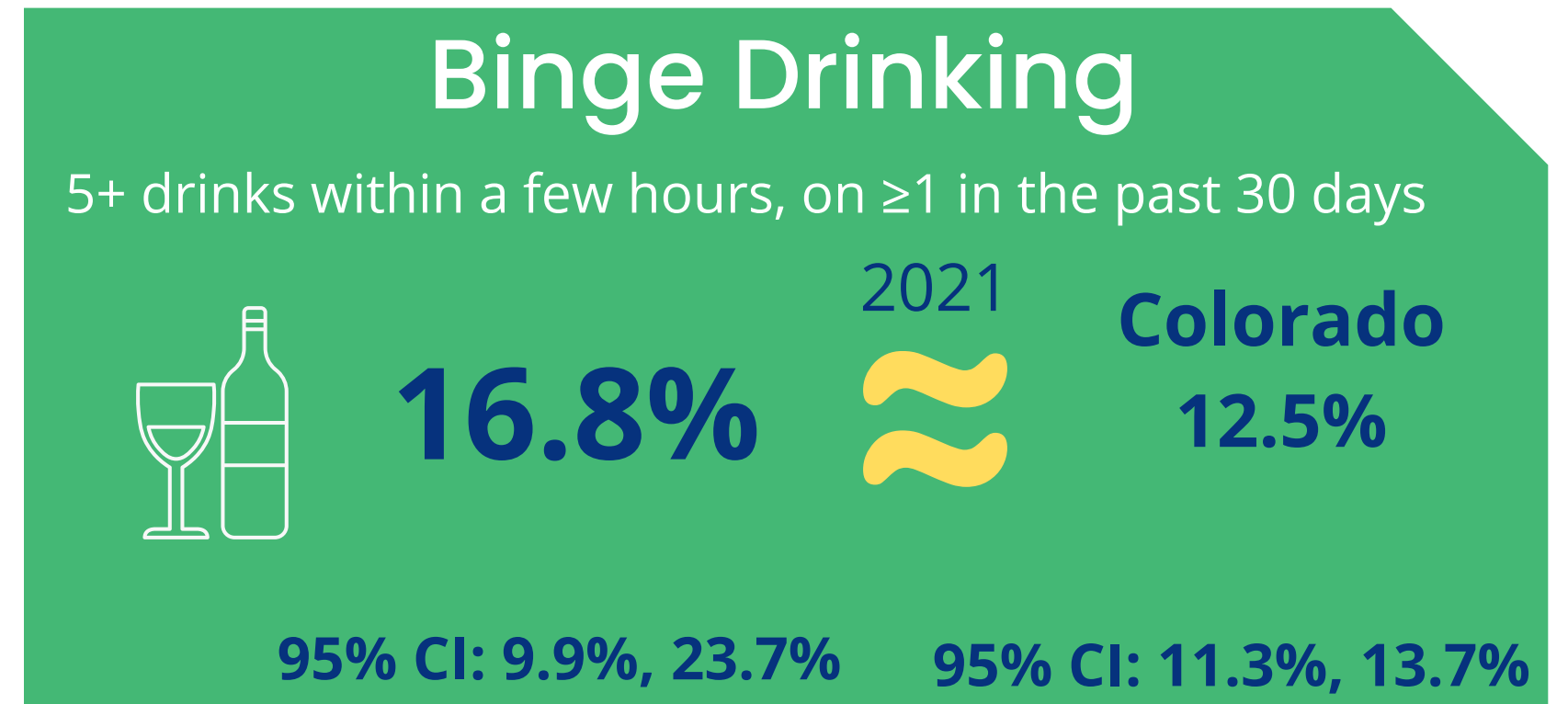
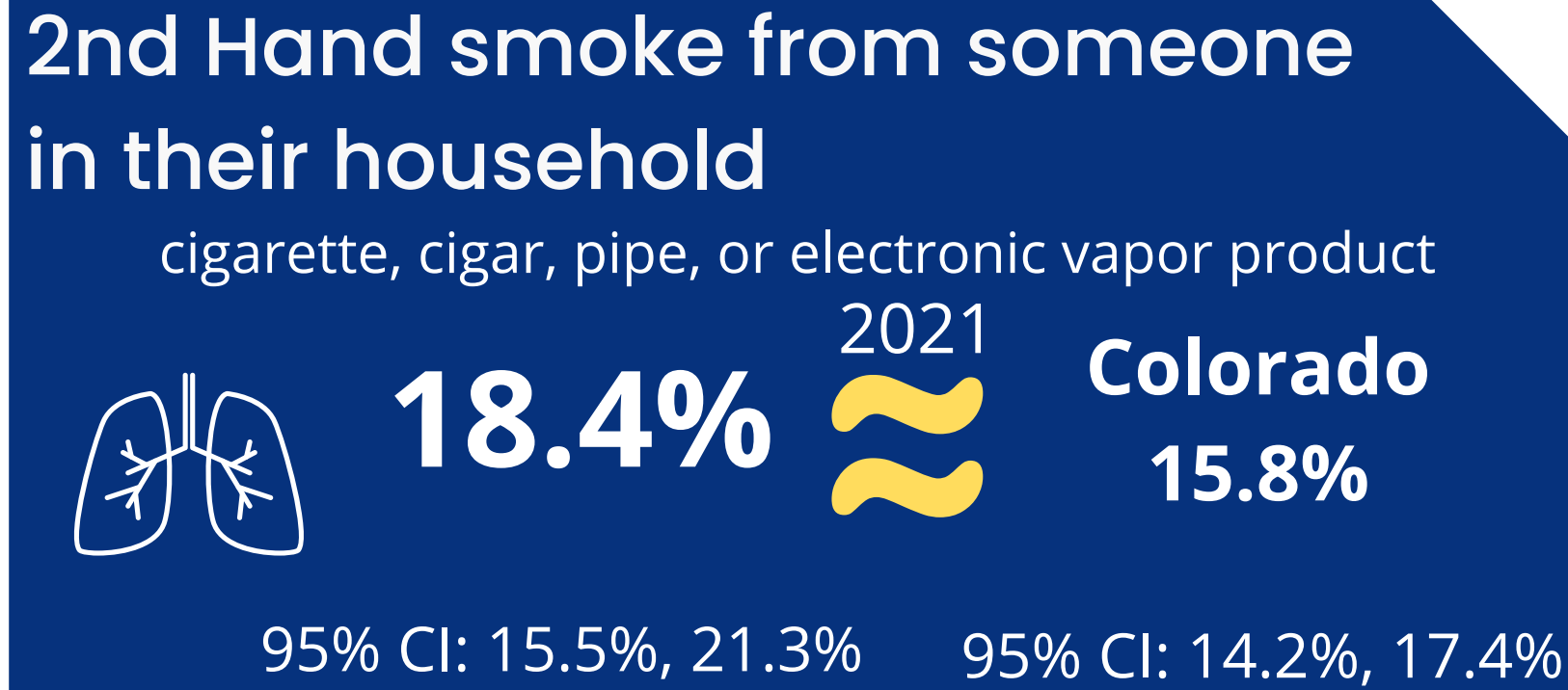
Source: Colorado Department of Human Services, COHID

\*May not demonstrate the most reliable estimates

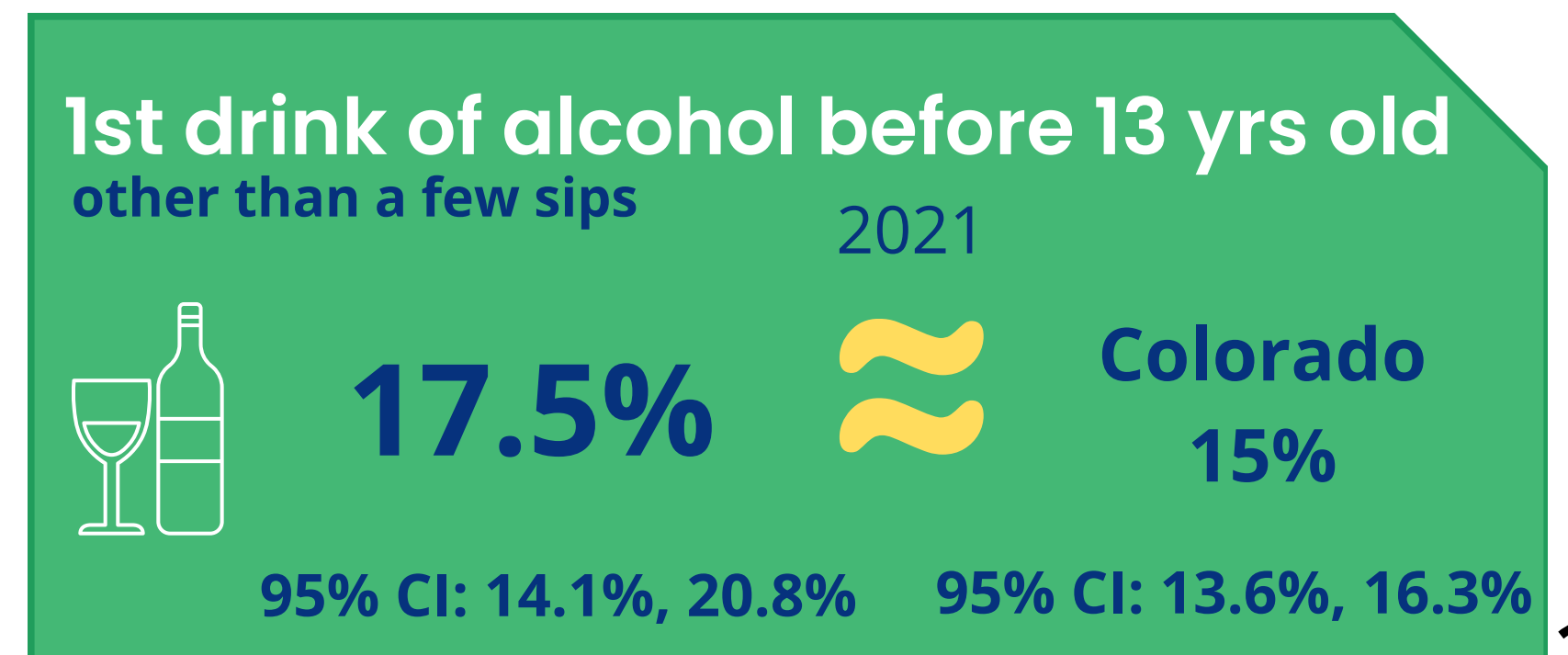
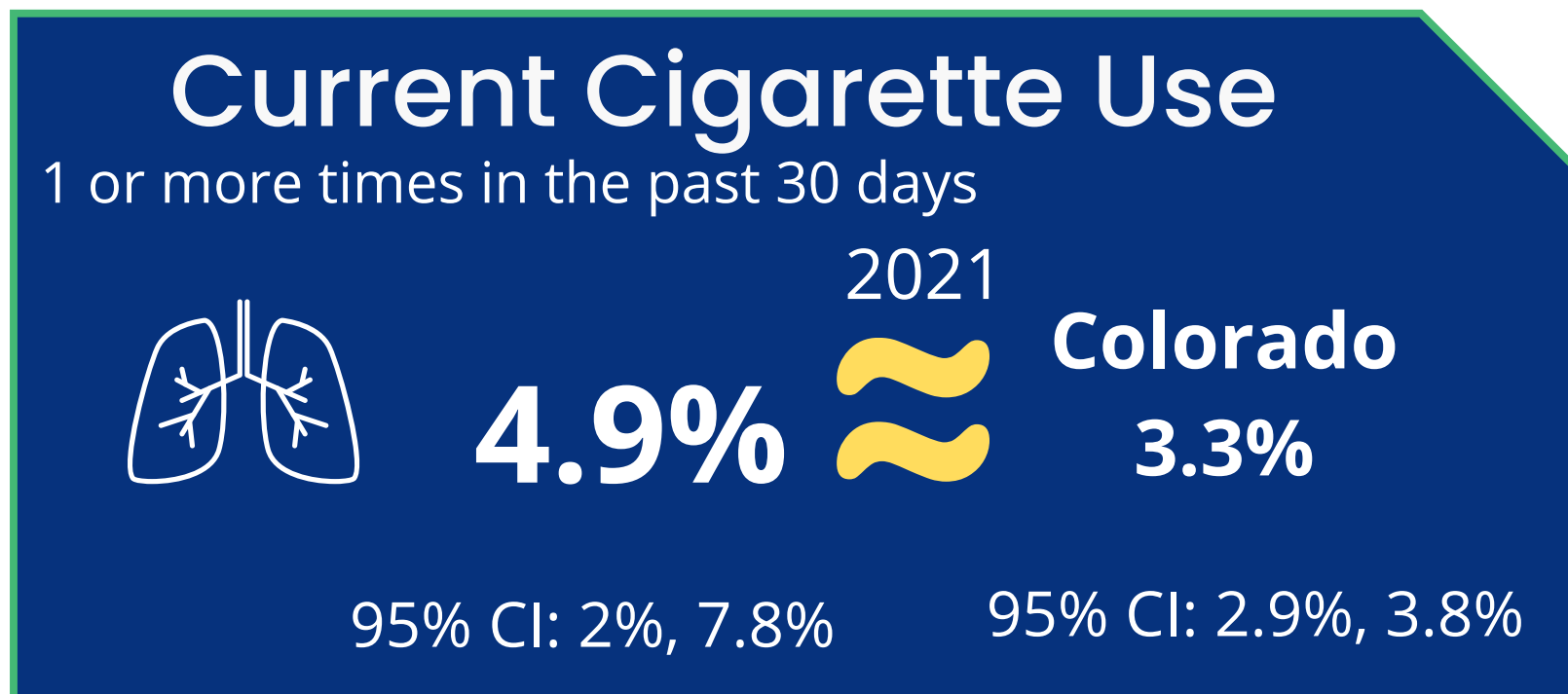
# Region 10

# Behavioral/Mental Health

## Middle School & High School Students



Source: Healthy Kids Colorado Survey



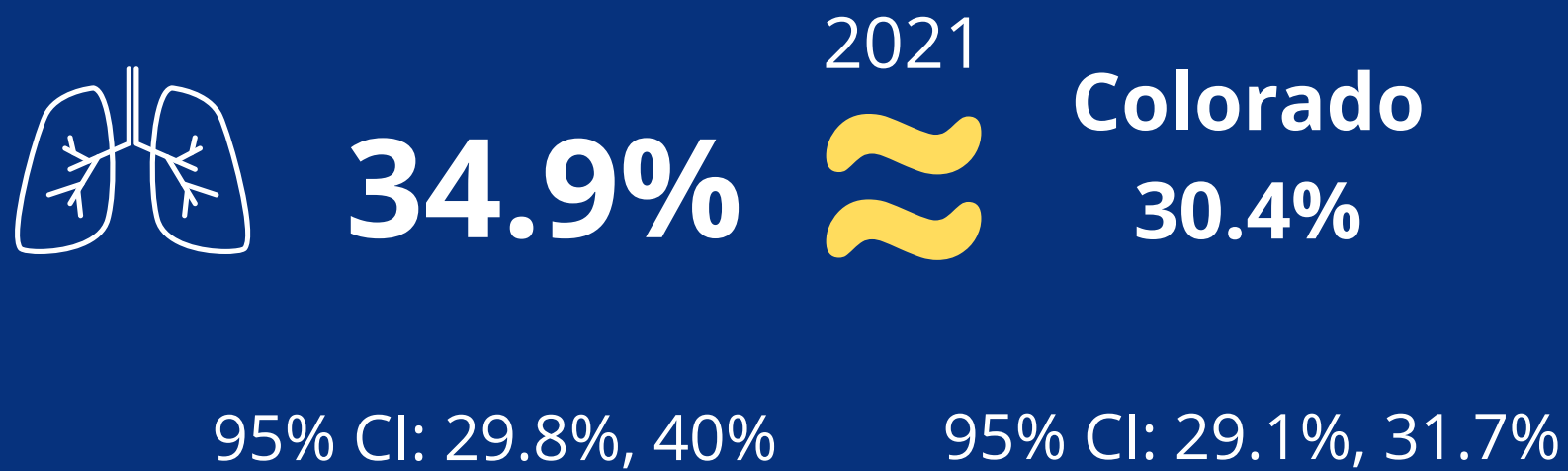


# Region 10

# Behavioral/Mental Health

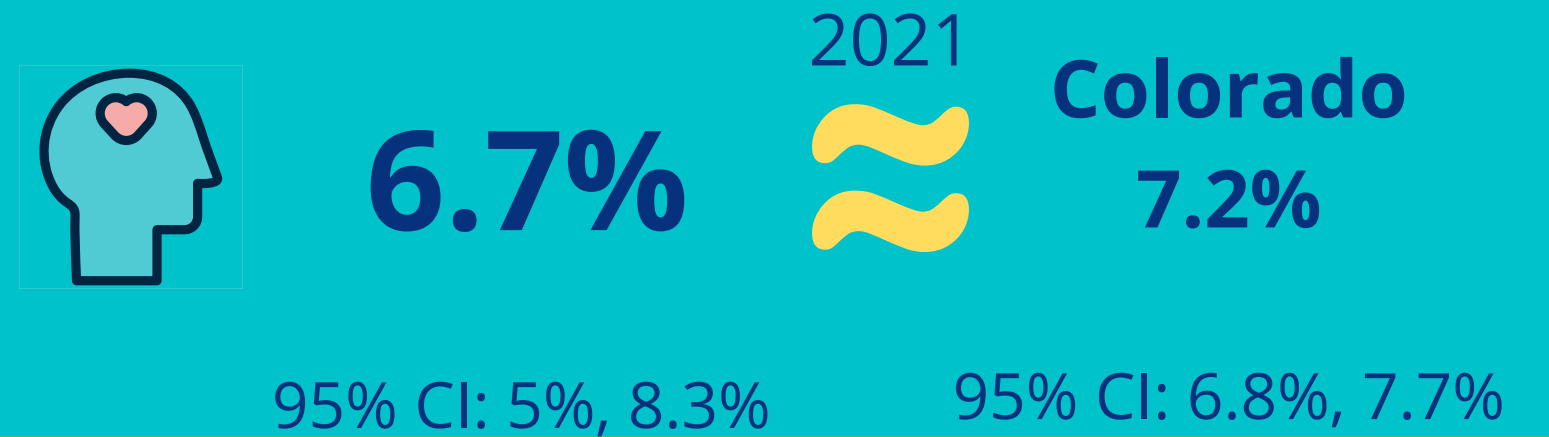
## Middle School & High School Students

### Current Electronic Vapor Use



### Attempted Suicide

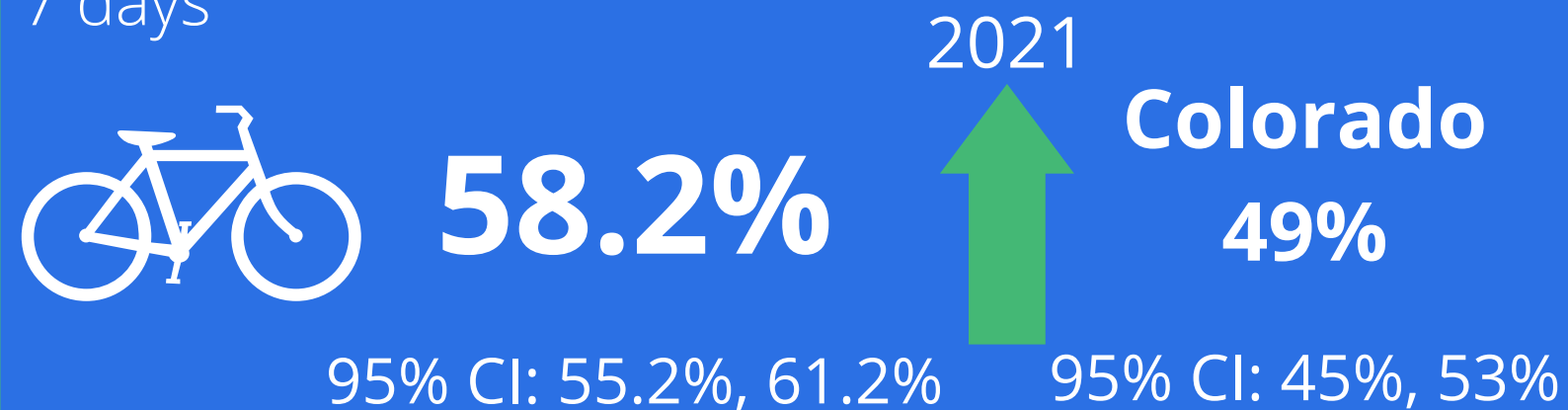
1 or + times in the last 12 months



Source: Healthy Kids Colorado Survey

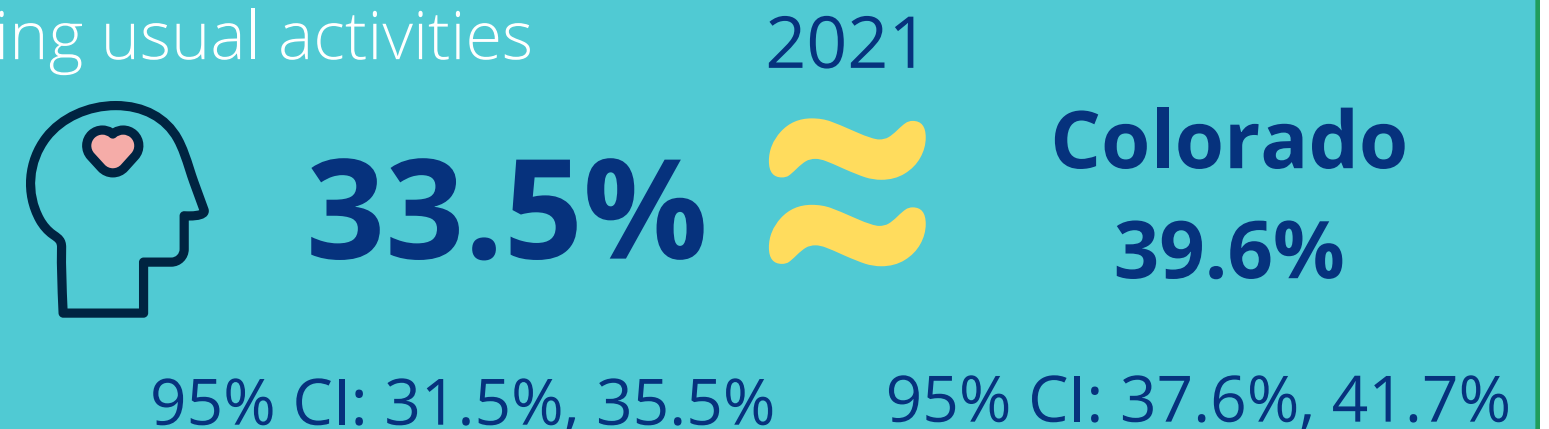
### Physical Activity

Total of at least 1hr per day on 5 or more in the past 7 days

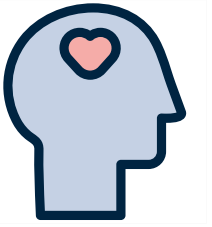


### Felt Sad or Hopeless

almost every day for 2 wks or + in a row they stopped doing usual activities



# Mental Health



## Rate of Mental Health diagnosed Hospitalizations - San Miguel



**1,136**  
per 100,000

Lower than the state  
(2,838 per 100,000)

Age-adjusted suicide rate per 100,000				
	2009-2012	2013-2016	2017-2020	Total Count
Delta	20.7	34.2	26.3	107
Gunnison	11.5	30.5	31.0	51
Hinsdale	*	*	*	*
Montrose	19.5	17.4	32.8	124
Ouray	*	36.8	31.5	17
<b>San Miguel</b>	<b>10.5</b>	<b>18.0</b>	<b>12.2</b>	<b>15</b>
Colorado	18.1	19.4	21.3	13,127

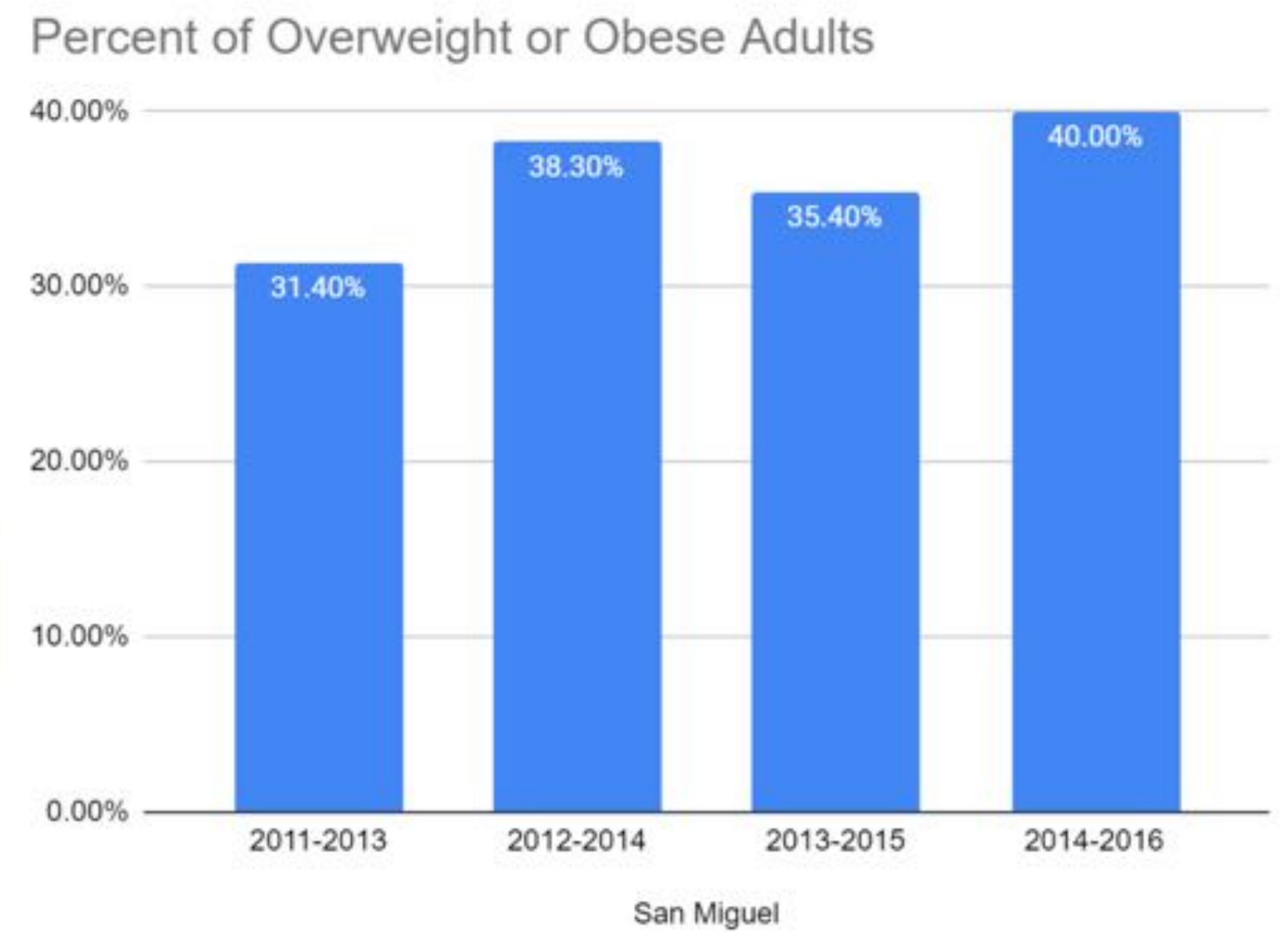
Source: Colorado Vital Statistics Program (Death Certificate)

\*values suppressed

# Healthy Eating Active Living

2017  
Priority

No significant trends in obesity for adults in San Miguel.



No significant trends with high school students.

	2013 (95% CI)	2015 (95% CI)	2017 (95% CI)	2019 (95% CI)
<b>Region 10</b>	<b>21.5%</b> (13.4, 29.6)	<b>24.7%</b> (20.7, 28.7)	<b>18.7%</b> (16.2, 21.3)	<b>21%</b> (18.1, 23.8)
<b>Colorado</b>	<b>19.3%</b> (18, 20.7)	<b>20.8%</b> (18.4, 23.2)	<b>22%</b> (20.6, 23.3)	<b>21.6%</b> (20.5, 22.7)

Source: Healthy Kids Colorado Survey

Source: Behavioral Risk Factor Surveillance System, COHID VISION Tool



# Healthy Eating Active Living

No significant trends over time.

Percent of Adults who consumed vegetables less than 1 time per day			
	2011-2013	2013-2015	2015-2017
<b>Region 10</b>	14.5%	12.1%	12.9%
<b>Colorado</b>	19.1%	18.5%	17.6%



Lower than the state at all 3 time periods.



Percent of Adults who eat fruit less than 1 time per day			
	2011-2013	2013-2015	2015-2017
<b>Region 10</b>	33.8%	32%	31%
<b>Colorado</b>	35.7%	35.7%	34.3%



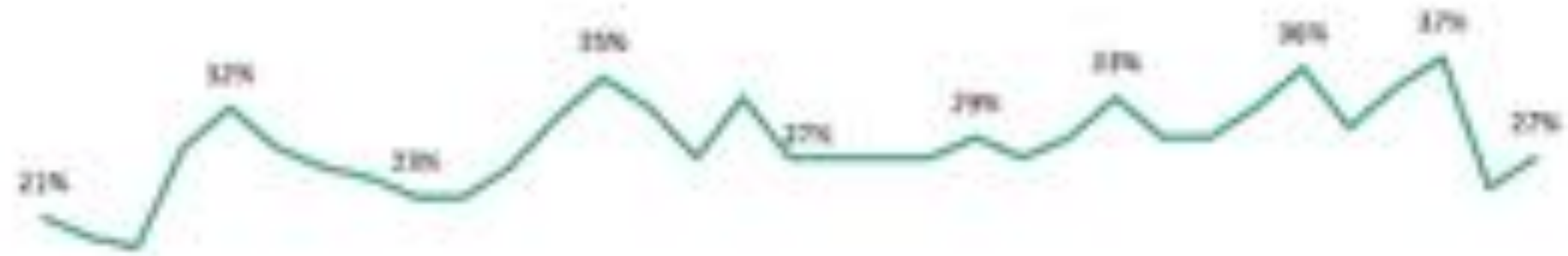
Similar to state at all 3 time periods.

Source: Behavioral Risk Factor Surveillance System (BRFSS), Visual Information System for Identifying Opportunities & Needs

All some points during the pandemic, nearly 2 in 5 households with children reported their kids weren't eating enough because food was unaffordable.



Colorado households with children where children were not eating enough because food was unaffordable, June 2020—March 2022



Jun 8, 2020    Jun 25, 2020    Aug 19, 2020    Sep 10, 2020    Nov 11, 2020    Jan 20, 2021    Mar 9, 2021    Mar 12, 2021    Jun 21, 2021    Aug 1, 2021    Sep 1, 2021    Dec 1, 2021 - Mar 10, 2022

Source: Foundation for Economic Research analysis of data from the U.S. Census Bureau, Household Food Security in 2020-2022

# Mortality – San Miguel County

## Top 3 Leading Cause of Years of Potential Life Lost (YPLL) (measure of premature mortality)

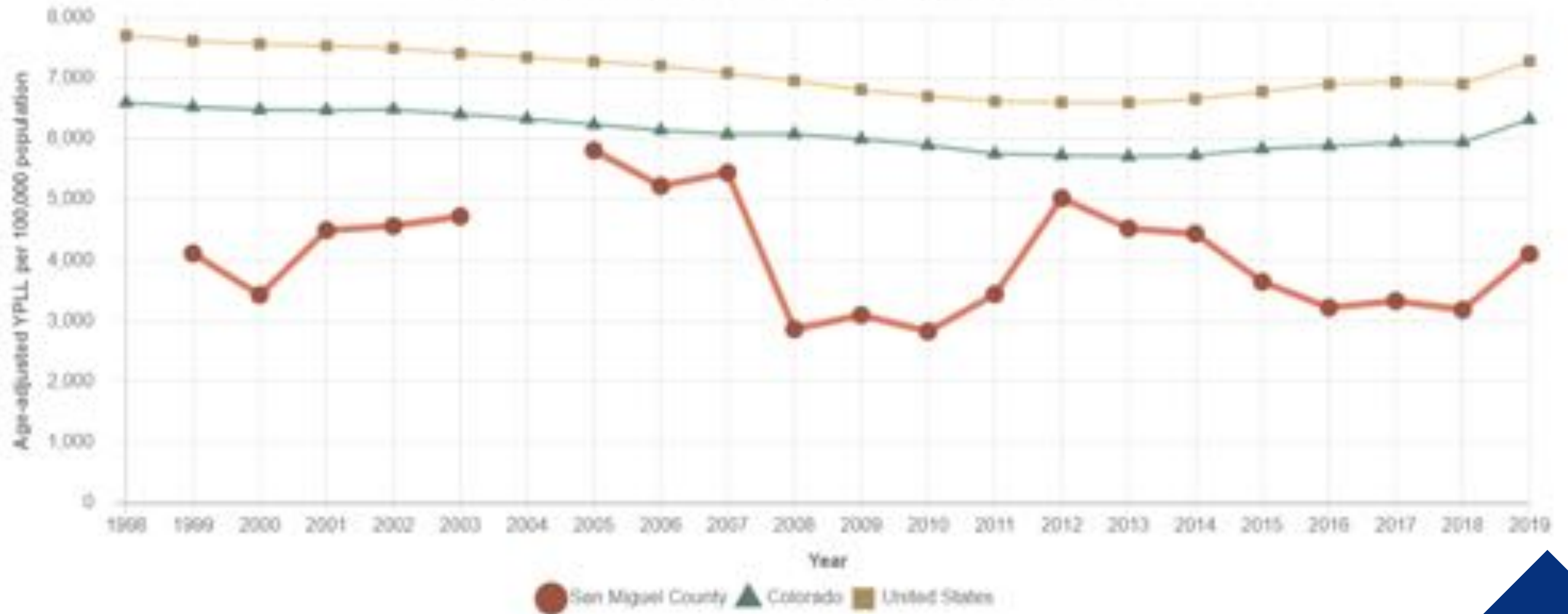
-  **1 Unintentional Injuries (1,139 per 100,000)** 95 % CI: 999.3, 1287  
Similar to the state (1,009 per 100,000) (95 % CI: 1003.6, 1013.8)
-  **2 Malignant Neoplasms (533 per 100,000)** 95 % CI: 438.7, 636  
Higher than the state (400 per 100,000) 95 % CI: 396.5, 403
-  **3 Heart Disease (135 per 100,000)** 95 % CI: 89.9, 189  
Lower than the state (296 per 100,000) 95 % CI: 292.9, 298.5



# Mortality

## Premature death in San Miguel County, CO Years of Potential Life Lost (YPLL): county, state and national trends

No significant trend was found in San Miguel County for this measure.



Notes:  
Each year represents a 3-year average around the middle year (e.g. 2015 is the middle year of 2014-2016)

# Age-adjusted Cancer Rates

## Top 3 Cancer Sites (2015-2019) SMC

Similar to state  
47.9 per 100,000



54

per 100,000

95% CI:  
29.76, 78.7

Male Genital system  
Cancer Case Rate

95% CI: 47.09, 48.61

Similar to state  
67.8 per 100,000



49

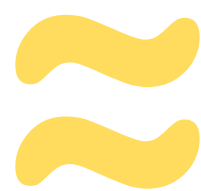
per 100,000

95% CI:  
25.21, 72.4

Breast Cancer Case  
Rate

95% CI: 66.86, 68.75

Similar to state  
68.6 per 100,000



43

per 100,000

95% CI:  
17.62, 69.1

Digestive system Cancer  
Case Rate

95% CI: 67.67, 69.56

**Higher than state  
(19.5 per 100,000)**

95% CI: 18.95, 19.96



39

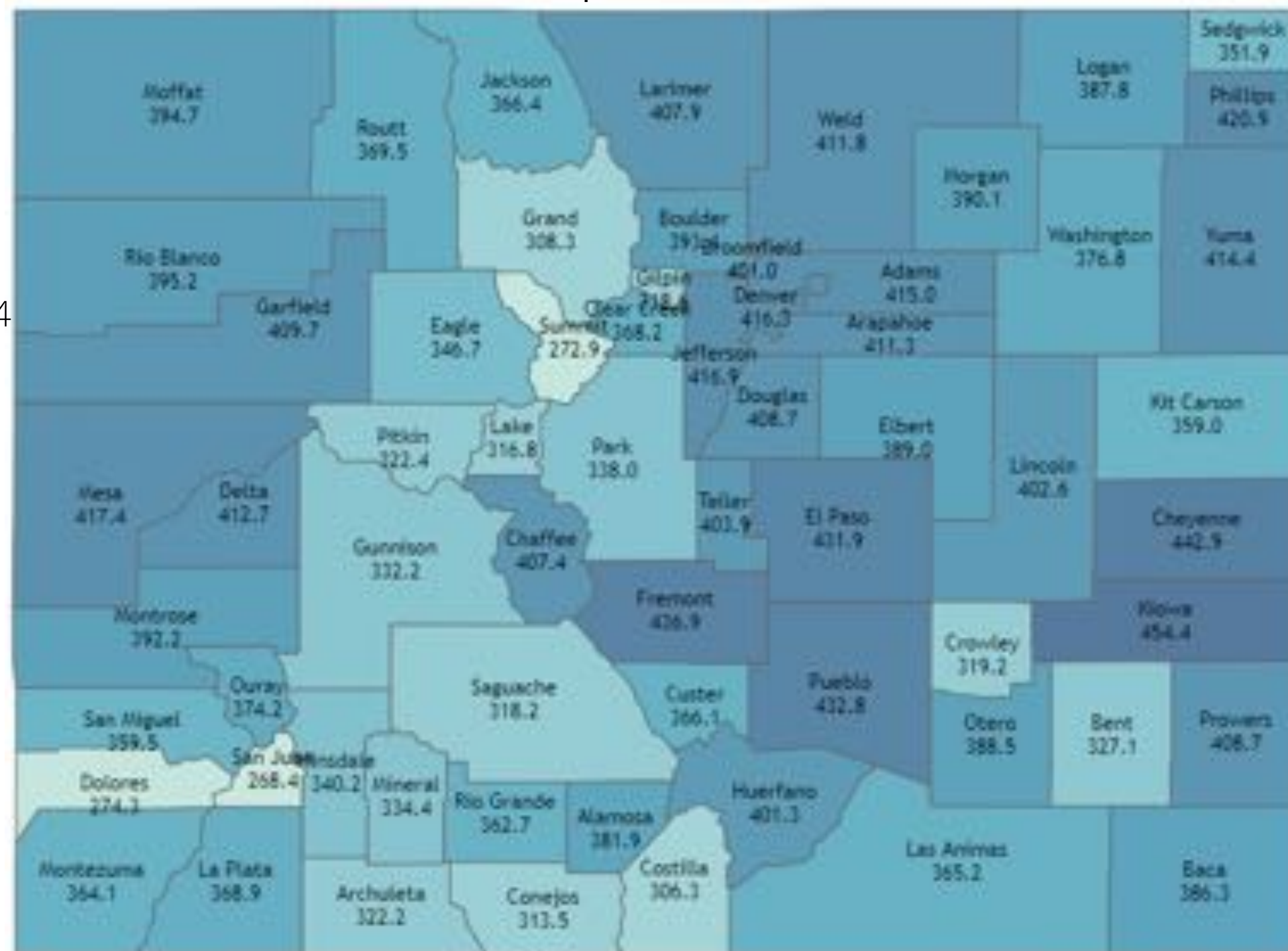
per 100,000

Lymphoma

# Health Outcomes

## All Cancer Site Cases (2009-2019)

359.5 per 100,000



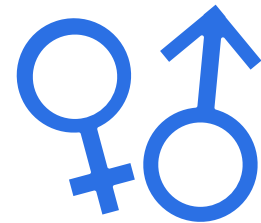
Source: Colorado Central Cancer Registry, COHID

# Health Outcomes San Miguel County

## Sexually Transmitted Diseases/Infections

(STD/STI Rates, 2018)

### Gonorrhea Infections



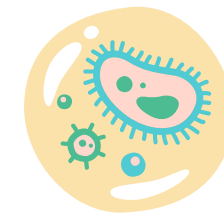
25

per 100,000

**Lower than state (158 per 100,000)**

**Lower than US (179 per 100,000)**

### Chlamydia Infections



226

per 100,000

**Lower than state (519 per 100,000)**

**Lower than US (540 per 100,000)**



# Access to Care



## Insurance

### San Miguel County

**20.2%** Working-age Adults eligible but not enrolled in Medicaid

State (12.1%)

Source: Colorado Health Institute, COHID

**26%** Children eligible but not enrolled in Medicare or

State (6.3%)

**CHP+**

Source: Behavioral Risk Factor Surveillance System, COHID

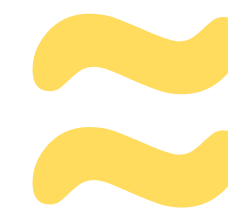


**9.9%** Children without Health Insurance coverage

Higher than the state (5.7%)

**95% CI SMC: 7.6, 12.2 95% CI CO: 5.2, 6.2**

Source: Small Area Health Insurance Estimates, COHID



**12.9%** Adults without Health Insurance coverage

Similar to the state (10.8%)

**95% CI SMC: 11.1, 14.7 95% CI CO: 10.4, 11.2**

Source: Small Area Health Insurance Estimates, COHID

Colorado's important progress with reducing the child uninsured rate had stalled in the years before the pandemic



Children under 19 who were uninsured, 2008-2019



Source: U.S. Census Bureau, Health Insurance Historical Tables

# Aging in Place (Older Adult Health)

## San Miguel County

Percent with a disability

13.7%

65-74 years old

37.6%

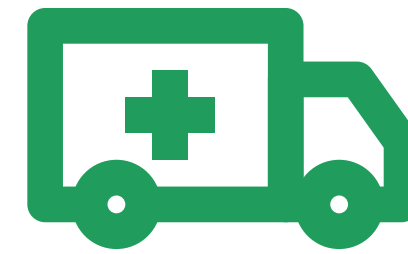
75+ years old

State (22.2% and 47.5%)

Source: American Community Survey, US Census Bureau, 2015-2019

### Ambulatory Difficulty

65 and older



9.9%

State (17.7%)

Source: American Community Survey, US Census Bureau, 2016-2020

### Independent Living Difficulty

65 and older



0.7%

State (11.4%)

Source: American Community Survey, US Census Bureau, 2015-2019



# Aging in Place (Older Adult Health)

Up to date on a core set of preventative services

- ✓ Pneumococcal vaccine
- ✓ Flu vaccine in past year
- ✓ Mammogram in past 2 years (Females only)
- ✓ Fecal Occult Blood test (FOBT) in past year  
OR  
sigmoidoscopy in past 5 years and FOBT past 3 years



**40.7%**

**Region 10**

95% CI: 36.1%, 45.3%

**Lower than the state (49.3%)**

95% CI: 48.4%, 50.17%



# Key Informant Interviews



# Community Health Assessment

Tri-County Health Community Health  
Assessment

Kids Count Data Center  
Kids Count Archive



# Next Steps

1

Finalize Survey,  
Finalize Key  
Informant  
Questions

2

Promote survey,  
Perform Key  
Informant  
Interviews

3

Use data and  
input from  
community to  
determine  
priorities

# Contact Information

Erika Stoerkel:  
[estoerkel@gunnisoncounty.org](mailto:estoerkel@gunnisoncounty.org)

Margaret Wacker:  
[mwacker@gunnisoncounty.org](mailto:mwacker@gunnisoncounty.org)

Grace Franklin  
[gracef@sanmiguelcountyco.gov](mailto:gracef@sanmiguelcountyco.gov)