

# Hinsdale County

Tara Hardy, Public Health Director  
Presentation by West Central Public Health Partnership

Valeria Ayala Alonso, WCPHP Intern, MPH Candidate

Anabelle Faivre, WCPHP Intern, Bachelors Public Health Candidate

Margaret Wacker, MPH, WCPHP Coordinator

Erika Stoerkel, MPH, WCPHP Grants Coordinator



# Agenda

- 1 **Welcome**
- 2 **County Data Report**
- 3 **Key Informant Interview**
- 4 **Community Survey**
- 5 **Next steps**

# Regional Health Assessment Timeline

1

Secondary Data,  
Key Informant  
Interviews,  
Community  
Survey

2

Complete Health  
Assessment by  
December of  
2022

3

Prioritization  
Process: Winter  
2022/2023

**1**

**1 Minute per  
slide**

**2**

**Interactive  
Presentation**

**3**

**Ask questions**

# Framework

**Health**

- Dental
- Access to medical care
- Availability of resources to meet daily needs (educational, & job opportunities, living wages, healthful foods)
- Social norms & attitudes, such as discrimination

**Behavioral Health**

- Depression.
- Anxiety
- Home life
- Substance use

**Food Security**

- Income
- Employment.
- Race/ethnicity
- Disability

**Housing**

- Home life
- Income
- Socioeconomic conditions, such as concentrated poverty
- Transportation options

**Childcare**

- Access to affordable childcare
- Quality schools
- Availability of enrollment
- Location

# Framework

## Health

Exposure to crime, violence, and social disorder, such as the presence of trash

Health Insurance

Aging

## Mental Health

Social support and social interactions

Aging

## Food Security

Population growth

Climate change

Increasing cost of food

## Housing

Public Safety

Residential segregation

Aging

## Childcare

Safety

Planned learning activities

Socioemotional skills

**Availability of resources to meet daily needs**



**Social norms & attitudes, such as discrimination**



**Aging**

# Health

**Access to medical care**



**Dental**



**Exposure to crime, violence, and social disorder, such as the presence of trash**



**Health Insurance**



**Depression**



**Anxiety**



**Aging**

# Behavioral Health

**Home Life**



**Social Support  
and social  
interactions**



**Substance abuse**







**Income**



**Climate change**



**Disability**



**Race/Ethnicity**

# Food Security

**Employment**



**Increasing cost of food**



**Aging**



**Population growth**



**Home life**



**Socioeconomic conditions**

**Transportation options**



**Aging**

**Residential Segregation**



# Housing

**Income**



**Public Safety**





**Affordable  
childcare**

**Location**



**Safety**

**Socioemotional  
skills**



**Quality schools**



# Childcare

**Availability of  
enrollment**



**Staff training**

**Planned learning  
activities**



# Data Sources



**State of Colorado**

**Colorado Health  
Indicators Dataset**

**Health Equity  
Compass**

**Community  
Commons**

**Colorado  
Children's  
Campaign**

**Kids Count**

# Data Considerations

**COVID-19 pandemic**

**Race/ethnicity**

**Less respondents**

**Online data sources**

# Interest Areas



**Affordable &  
Healthy  
Housing**



**Behavioral &  
Mental Health**



**Affordability &  
Access to Care**



**Aging in Place  
(Older Adult  
Health)**

The slide features decorative geometric shapes in the corners. In the top right, there are overlapping triangles in light blue and light green. In the bottom left, there are overlapping triangles in light green and light blue.

# Demographics

# Demographics

**Total Population**

**781**

**Population Change from 2010-2020**

↓ Hinsdale County: 6.52%

↑ Colorado: 14.8%

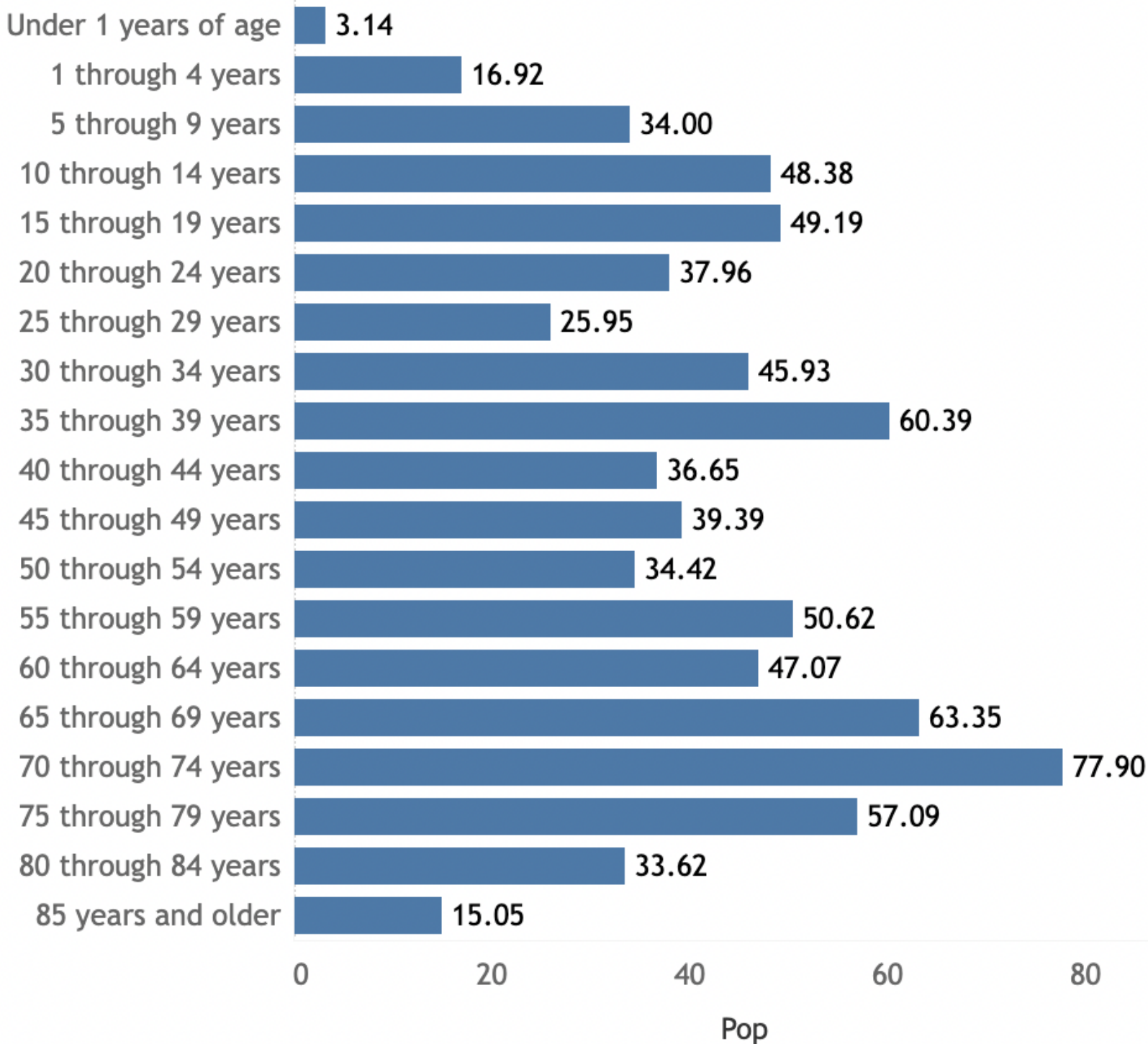
Source: Data Source: US Census Bureau, American Community Survey. 2016-20.



# Demographics

## Hinsdale County Population by Age

### Age Groups



Source: Population Estimates, COHID

# Demographics

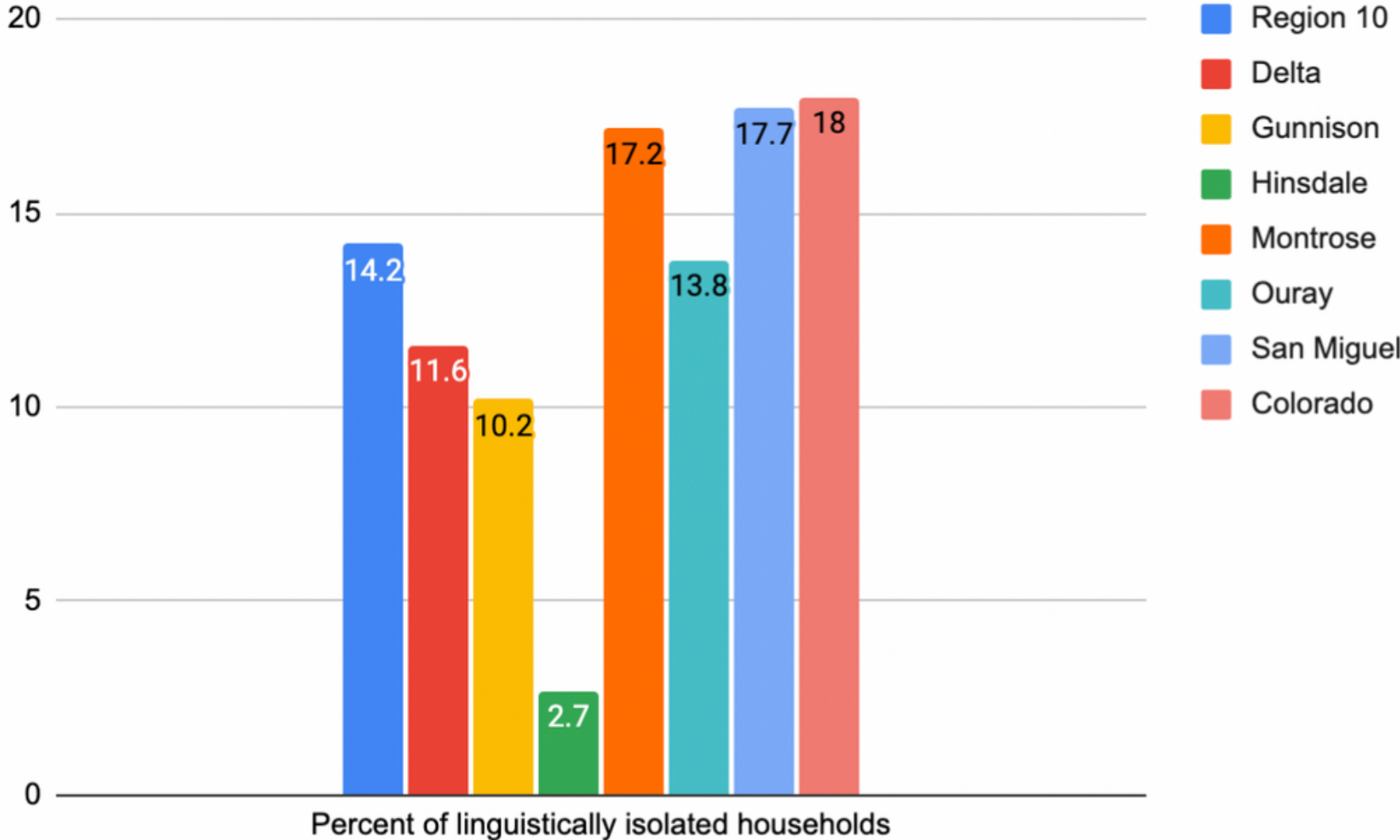
## Total Population by Race/Ethnicity

	Delta	Gunnison	Hinsdale	Montrose	Ouray	San Miguel	Colorado
<b>Non-Hispanic White</b>	80.81%	86.52%	86.43%	75.91%	93.19%	85.49%	67.50%
<b>Non-Hispanic Black</b>	0.65%	0.23%	1.66%	0.14%	1.55%	0.01%	3.94%
<b>Non-Hispanic Asian</b>	0.86%	0.38%	0.38%	0.82%	0.00%	1.39%	3.14%
<b>Non-Hispanic Native American or Alaska Native</b>	0.68%	1.03%	1.66%	1.15%	0.41%	0.95%	0.52%
<b>Non-Hispanic Native Hawaiian or Pacific Islander</b>	0.00%	0.00%	0.00%	0.13%	0.06%	0.00%	0.14%
<b>Non-Hispanic Some Other Race</b>	0.42%	0.13%	0.00%	0.02%	0.00%	0.21%	0.21%
<b>Non-Hispanic Multiple Races</b>	1.37%	2.16%	0.26%	1.24%	2.07%	1.04%	2.89%
<b>Hispanic or Latino</b>	15.23%	9.56%	9.60%	20.58%	2.72%	10.91%	21.66%

Source: Data Source: US Census Bureau, American Community Survey. 2016-20.

# Demographics

**Percent of Linguistically Isolated Households**



Source: US Census Bureau, American Community Survey. 2015-19.

A limited English-speaking household is one in which all members 14 years old and over have at least some difficulty with English.

<b>Region 10</b>	14.2% (11.7, 15.7)
<b>Delta</b>	11.6% (8.3, 14.9)
<b>Gunnison</b>	10.2% (6.2, 14.2)
<b>Hinsdale</b>	2.7% (0, 11.7)
<b>Montrose</b>	17.2% (14.5, 19.8)
<b>Ouray</b>	13.8% (7.5, 20)
<b>San Miguel</b>	17.7% (12.5, 22.9)
<b>Colorado</b>	18% (17.7, 18.3)

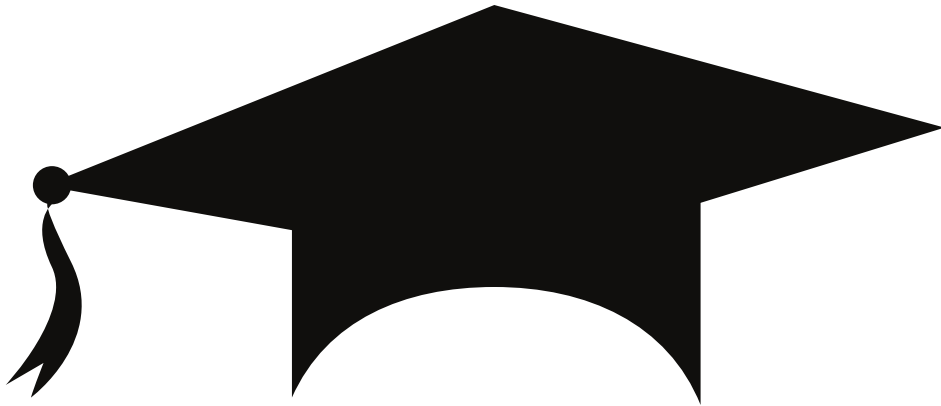
# Demographics

**Population Age 25+ with Bachelor's Degree or Higher, Percent**



**Hinsdale County: 43.73%**  
**Higher** than the state (41.60%)

Source: US Census Bureau, American Community Survey. 2016-20.



**Population Age 25+ with No High School Diploma, Percent**



**Hinsdale County: 4.13%**  
**Lower** than the state (7.92%)

Source: US Census Bureau, American Community Survey. 2016-20.

# Demographics

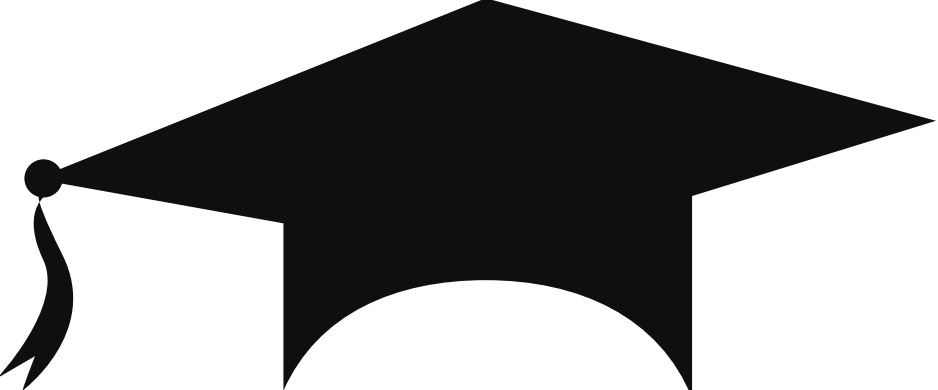
**Population Age 3-4 Enrolled in School, Percent**



**Hinsdale County: 100%**

**Higher** than the state (48.54%)

Source: US Census Bureau, American Community Survey. 2016-20.



**Graduation Rate**



**Hinsdale County: 100%**

**Higher** than the state (81.70%)

Source: Data Source: US Department of Education, EDFacts. 2020-2021.

Colorado's child care system has long been under-resourced. The pandemic exacerbated existing workforce and affordability challenges.

---



According to the National Association for the Education of Young Children, in mid-2021:

**80%**  
of Colorado child  
care centers  
surveyed reported  
a staffing shortage

**47%**  
were serving fewer children

**40%**  
were unable to open classrooms

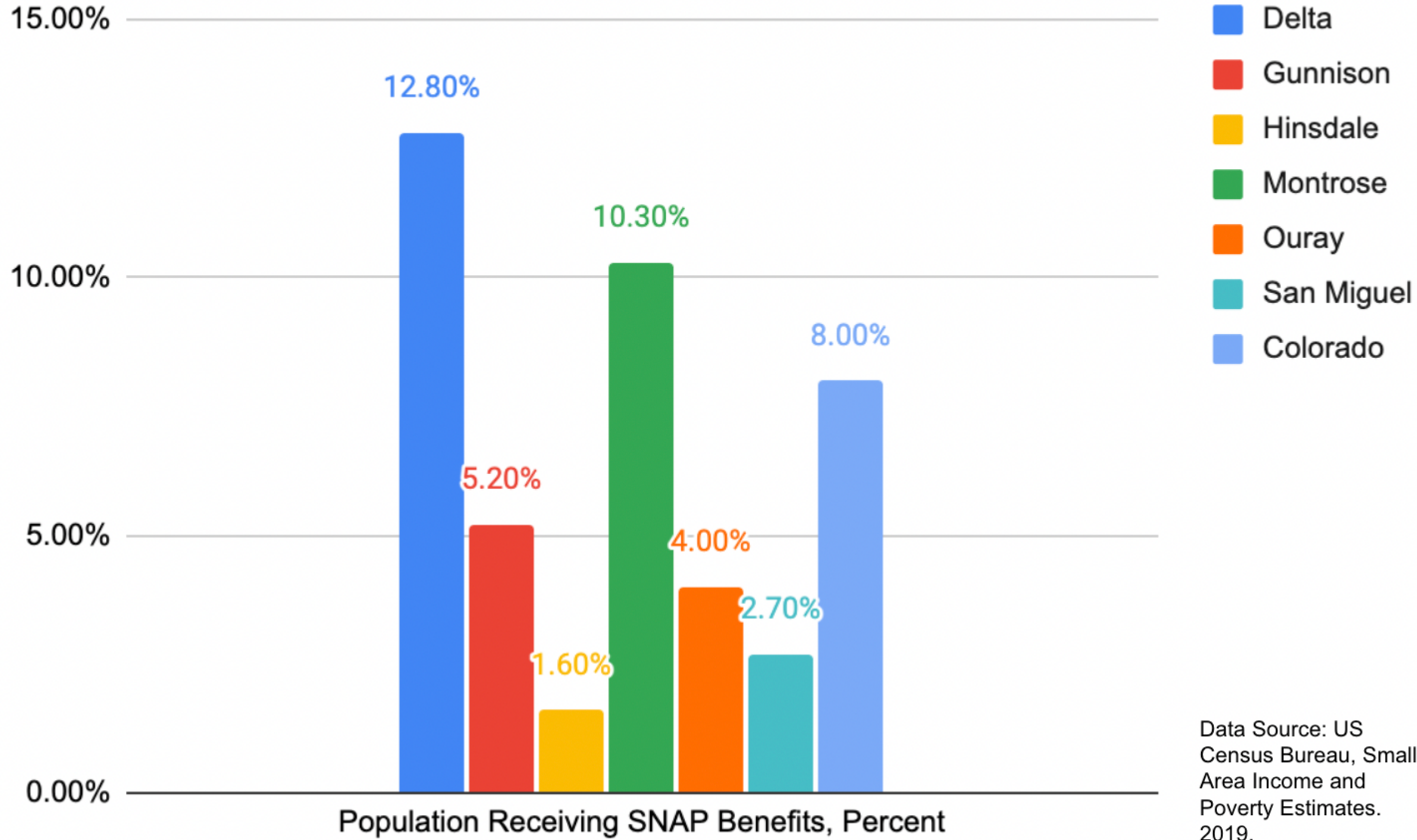
**34%**  
had longer waitlists

**26%**  
had to reduce operating hours

The slide features decorative geometric shapes in the corners. In the top right, there are overlapping triangles in light blue and light green. In the bottom left, there are overlapping triangles in light green and light blue.

# **Socioeconomic Factors**

# Socioeconomic Factors



Data Source: US Census Bureau, Small Area Income and Poverty Estimates. 2019.



# Socioeconomic Factors

## Percent Change in Poverty Level

	Percent Change in Poverty Level
<b>Delta</b>	-5.40%
<b>Gunnison</b>	-0.60%
<b>Hinsdale</b>	-6.40%
<b>Montrose</b>	0.40%
<b>Ouray</b>	5.20%
<b>San Miguel</b>	-2.70%

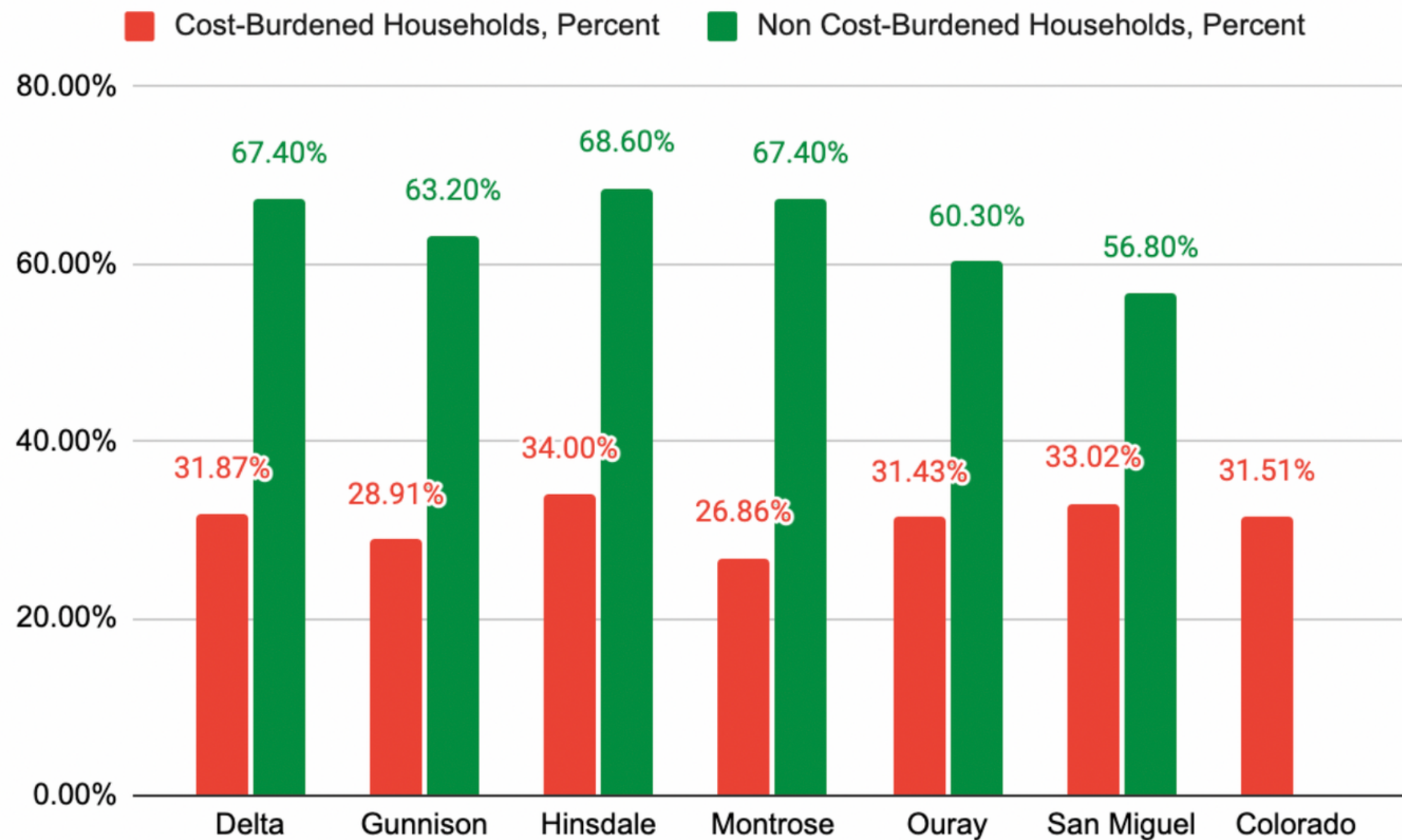
Change in the percentage of households with incomes twice the federal poverty level from 2012 to 2017.

Source: Colorado Equity Compass

The slide features decorative geometric shapes in the corners. In the top right, there are overlapping triangles in light blue and light green. In the bottom left, there are overlapping triangles in light green and light blue.

# **Affordable Housing**

# Affordable/Healthy Housing



Source: US Census Bureau, American Community Survey. 2016-20.

# Affordable/Healthy Housing

Percent of renter-occupied housing units with gross rent 50% or greater of household income in the past 12 months



**Hinsdale County: 5.6%**

Colorado: 23%

Occupied Housing Units with One or More Substandard Conditions, Percent



**Hinsdale County: 35.37%**

Colorado: 31.9%

Data Source: US Census Bureau, American Community Survey. 2016-20.

Percent of renter-occupied housing units



**Hinsdale County: 27.7%**

Colorado: 32.5

# Affordable/Healthy Housing

<b>County</b>	<b>Housing Affordability</b>
Delta	<b>41.6%</b>
Gunnison	<b>48.9%</b>
Hinsdale	<b>34.8%</b>
Montrose	<b>45.3%</b>
Ouray	<b>32.7%</b>
San Miguel	<b>43.8%</b>

The slide features decorative geometric shapes in the corners. In the top right, there are overlapping triangles in light blue and light green. In the bottom left, there are overlapping triangles in light blue and light green. The main content is centered text.

# **Behavioral/Mental Health**

# Behavioral/Mental Health Hinsdale County

2017  
Priority

## Excessive Drinking\*



**20%**

Colorado 20%

Source: BRFSS, SparkMap\*

2019

## No Leisure Time Activity\*

Light moderate physical activity



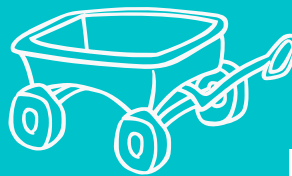
**19.8%**

Colorado 16.1%

Source: BRFSS, SparkMap\*

2016-2018

## Child Maltreatment Rate



**6.7**  
per 100,000



**Colorado**  
**9.7**  
per 100,000

2019

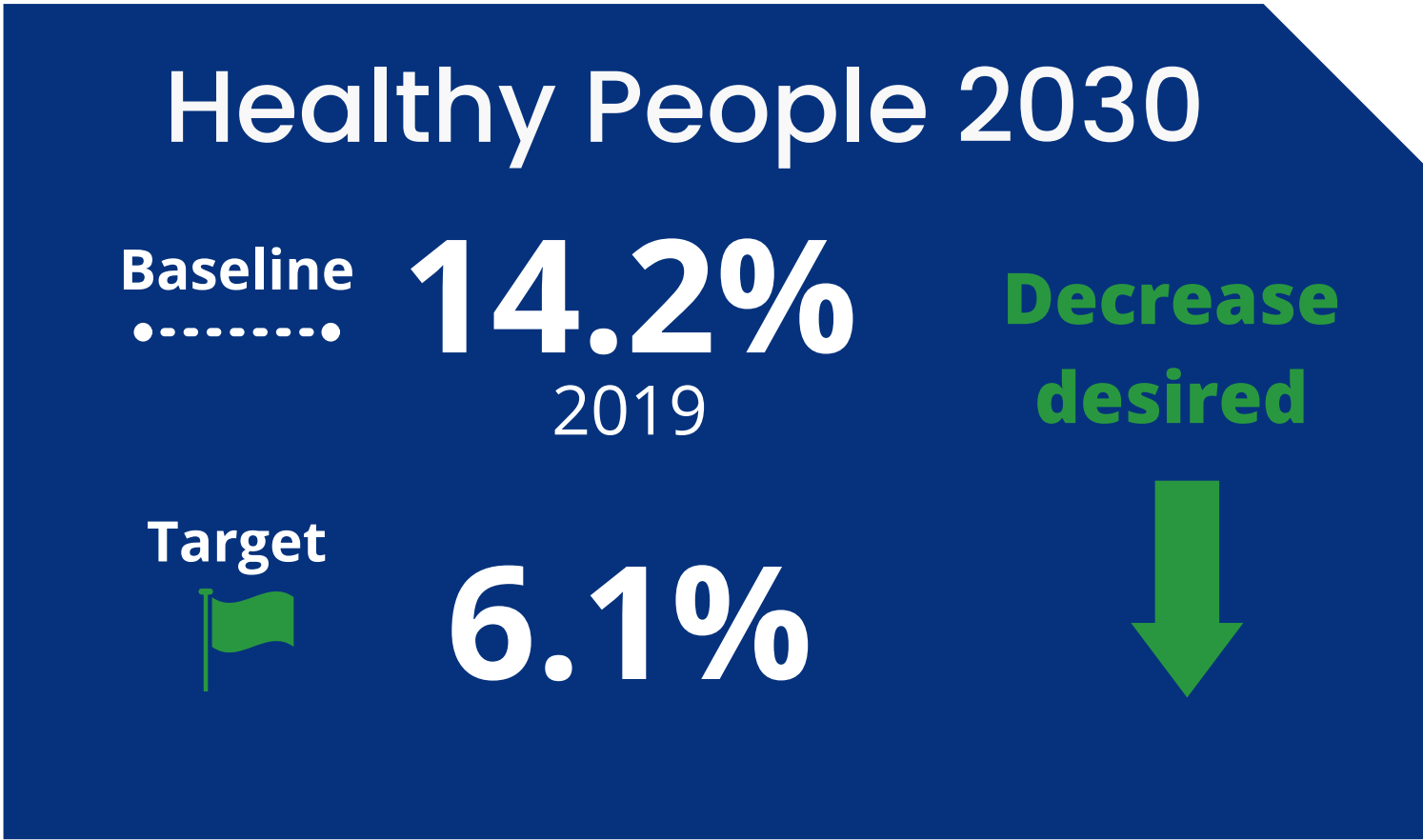
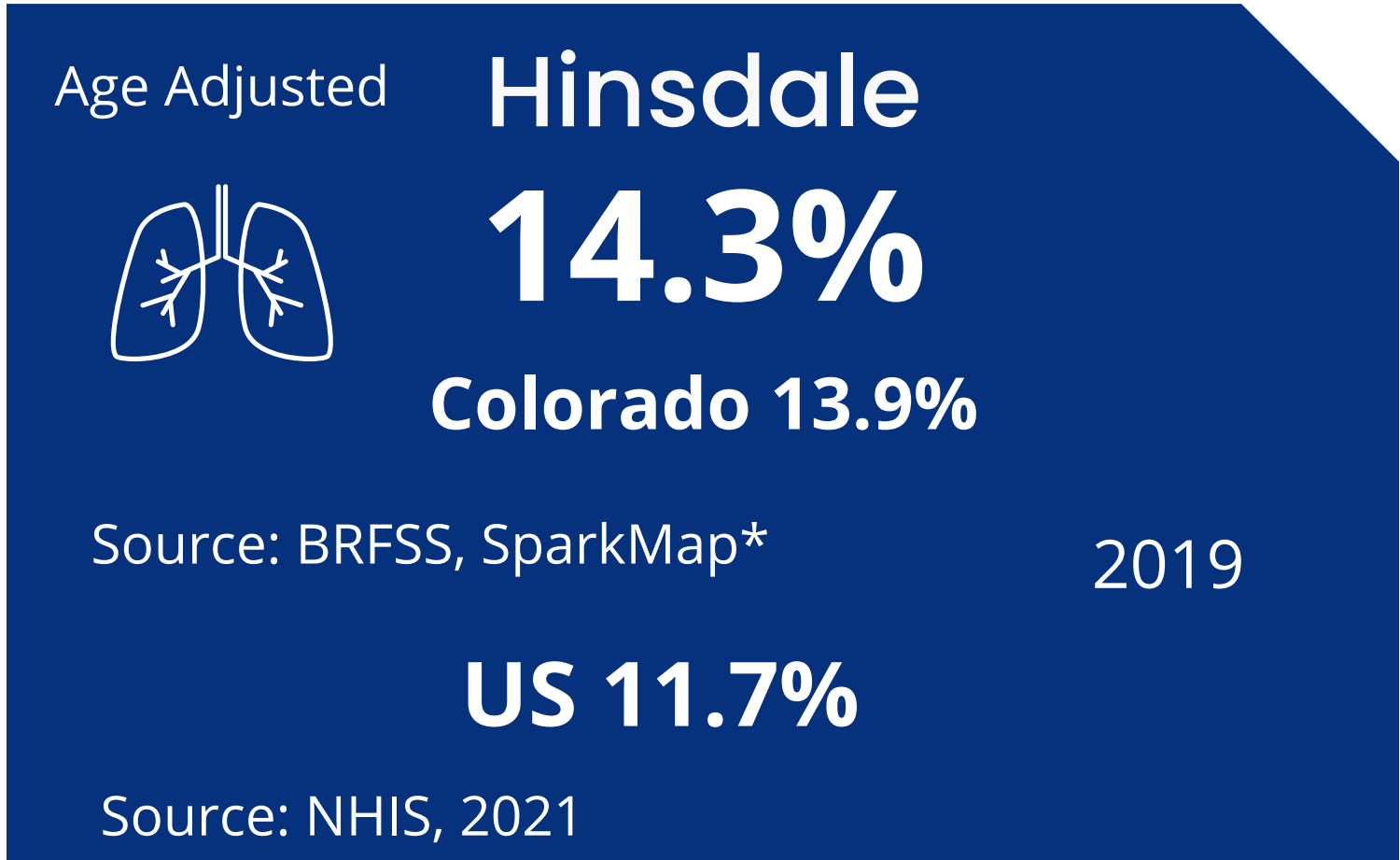
Source: Colorado Department of Human Services, COHID

\*Data may be unreliable

# Behavioral/Mental Health

2017  
Priority

## Hinsdale County Adult Current Smokers\*

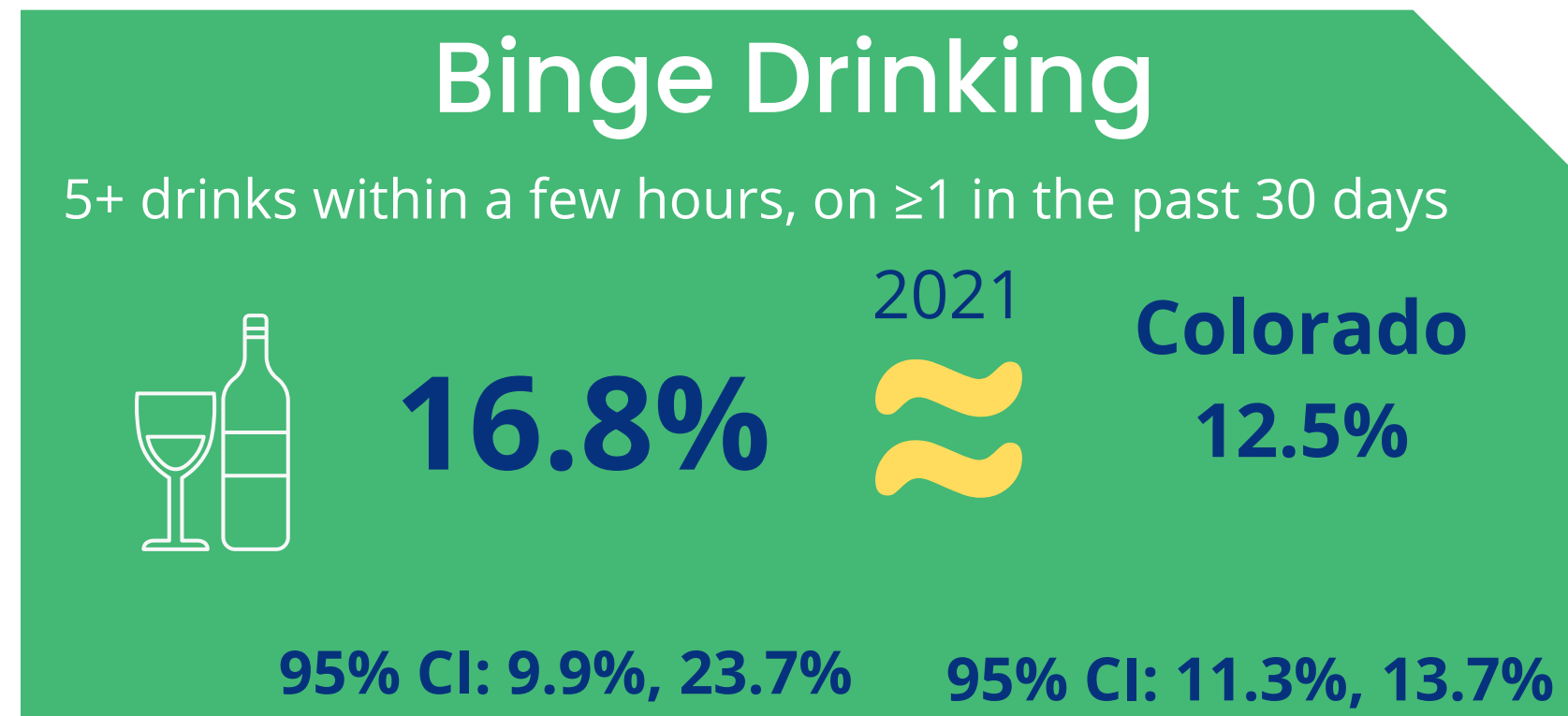
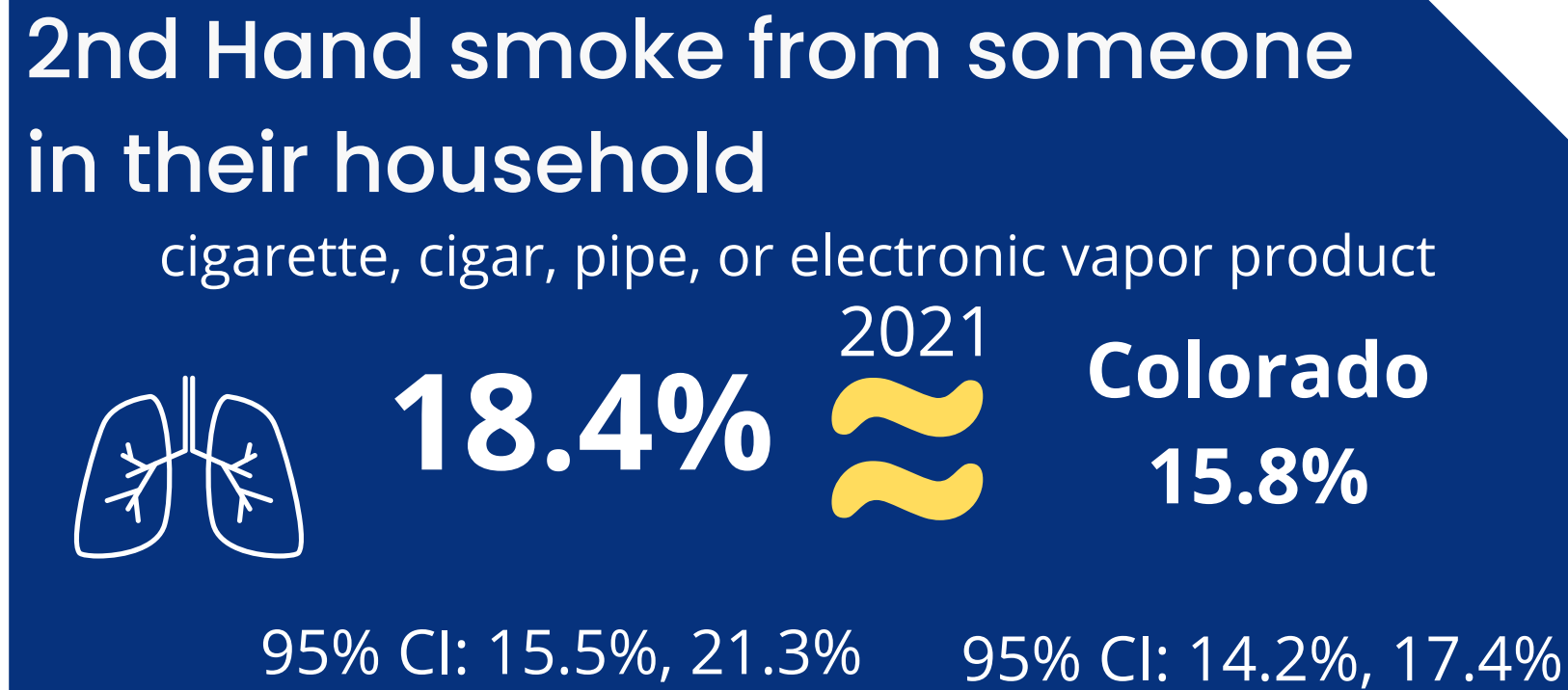




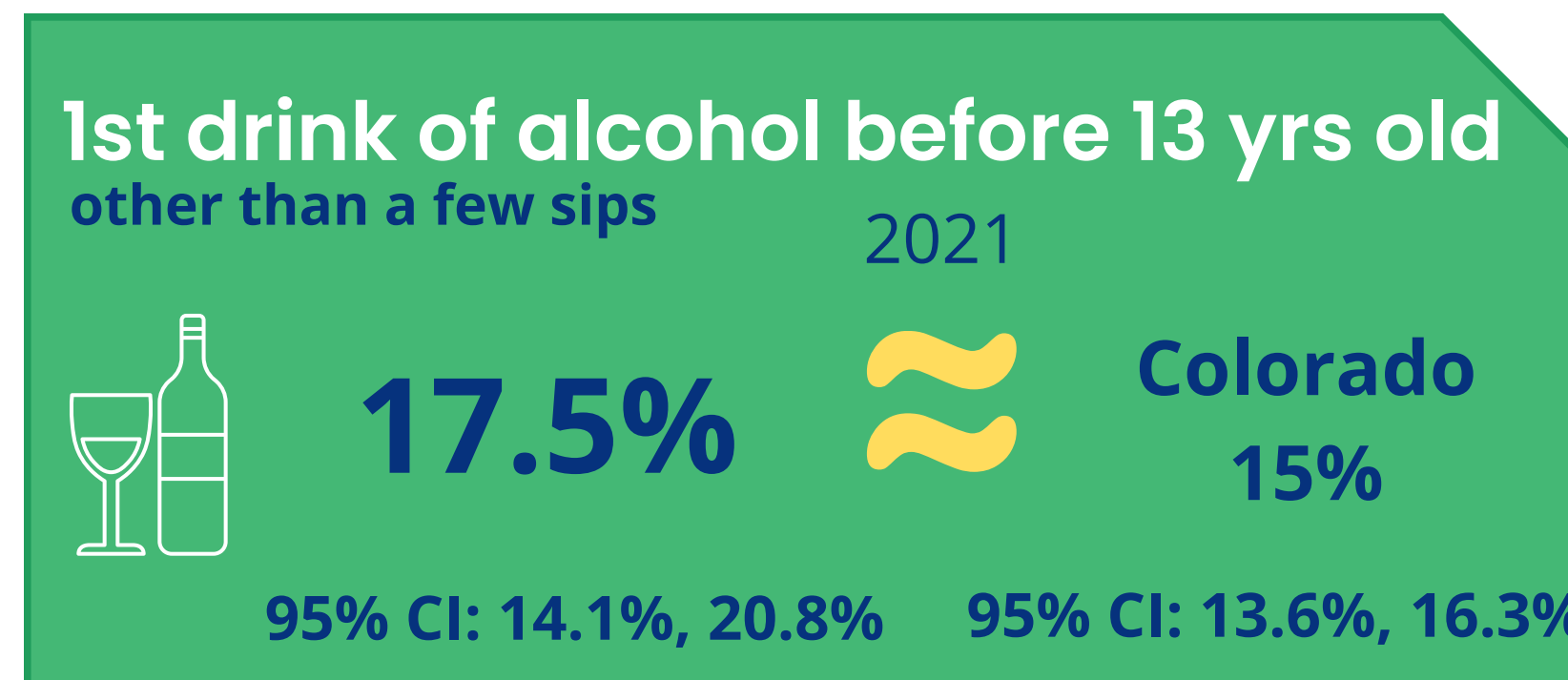
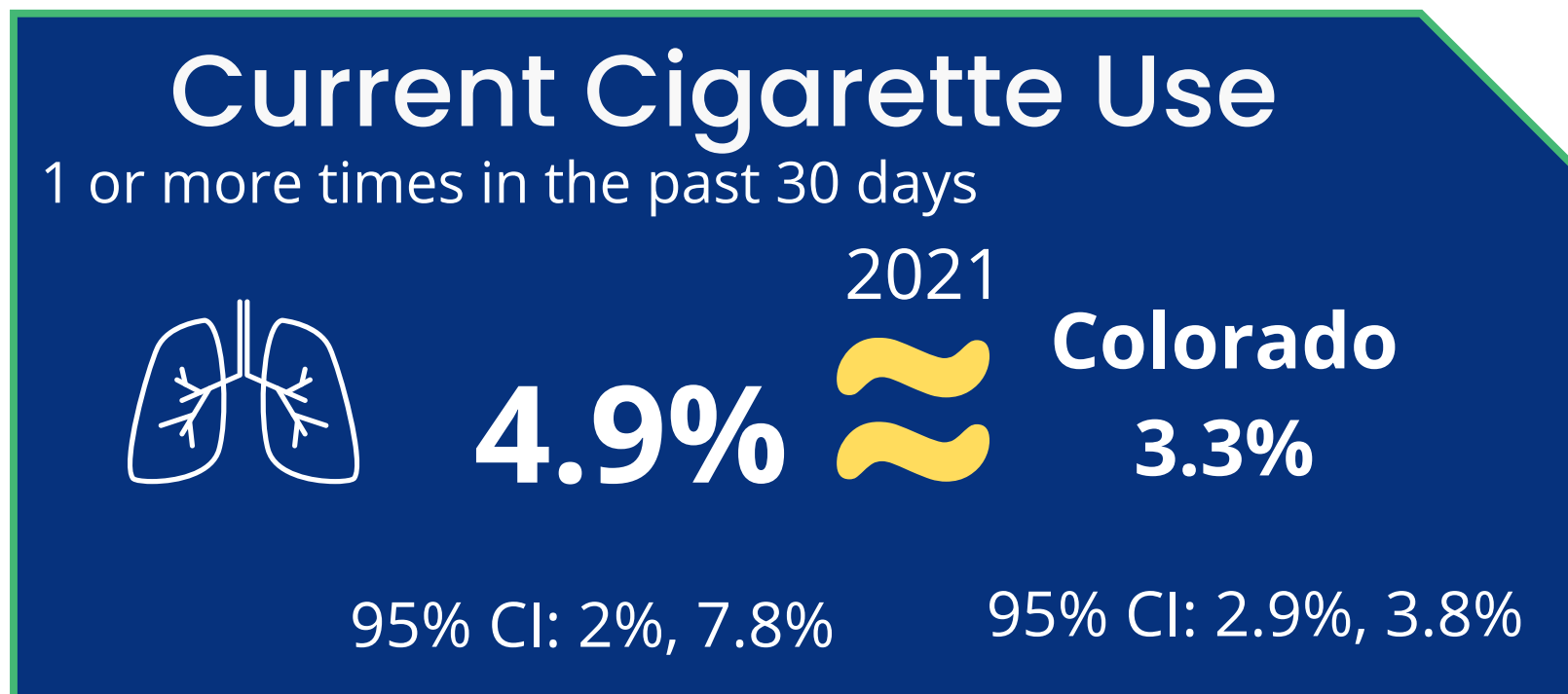
# Region 10

# Behavioral/Mental Health

## Middle School & High School Students



Source: Healthy Kids Colorado Survey



# Region 10

# Behavioral/Mental Health

## Middle School & High School Students

### Current Electronic Vapor Use



**34.9%**

2021  
≈

**Colorado**  
**30.4%**

95% CI: 29.8%, 40%

95% CI: 29.1%, 31.7%

### Attempted Suicide

1 or + times in the last 12 months



**6.7%**

2021  
≈

**Colorado**  
**7.2%**

95% CI: 5%, 8.3%

95% CI: 6.8%, 7.7%

Source: Healthy Kids Colorado Survey

### Physical Activity

Total of at least 1hr per day on 5 or more in the past 7 days



**58.2%**

2021  
↑

**Colorado**  
**49%**

95% CI: 55.2%, 61.2%

95% CI: 45%, 53%

### Felt Sad or Hopeless

almost every day for 2 wks or + in a row they stopped doing usual activities



**33.5%**

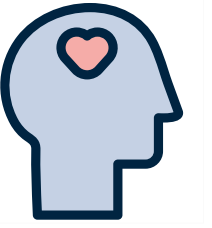
2021  
≈

**Colorado**  
**39.6%**

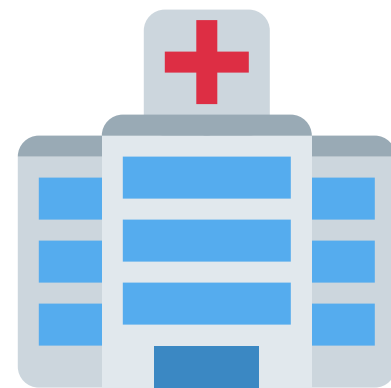
95% CI: 31.5%, 35.5%

95% CI: 37.6%, 41.7%

# Mental Health Hinsdale County



## Age-Adjusted Rate of Mental Health diagnosed Hospitalizations



**1,983** per 100,000

**Lower than the state: 2,838 per 100,000**

The page features decorative geometric shapes in the corners. In the top-right corner, there are overlapping triangles in light blue and light green. In the bottom-left corner, there are overlapping triangles in light blue and light green. The main text is centered on the page.

# **Healthy Eating Active Living**

# Healthy Eating Active Living

No significant trends over time.

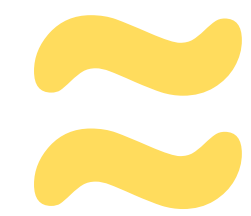
Percent of Adults who consumed vegetables less than 1 time per day			
	2011-2013	2013-2015	2015-2017
Region 10	14.5%	12.1%	12.9%
Colorado	19.1%	18.5%	17.6%



Lower than the state at all 3 time periods.



Percent of Adults who eat fruit less than 1 time per day			
	2011-2013	2013-2015	2015-2017
Region 10	33.8%	32%	31%
Colorado	35.7%	35.7%	34.3%



Similar to state at all 3 time periods.

Source: Behavioral Risk Factor Surveillance System (BRFSS), Visual Information System for Identifying Opportunities & Needs

# Healthy Eating Active Living



No significant trends with high school students.

<b>Percent of Obesity among High School Students</b>				
	<b>2013</b>	<b>2015</b>	<b>2017</b>	<b>2019</b>
<b>Region 10</b>	21.5%	24.7%	18.7%	21%
<b>Colorado</b>	19.3%	20.8%	22%	21.6%

Data: Healthy Kids Colorado Survey

# Healthy Eating Active Living

2017  
Priority

## Obese Adults (BMI < 30)

**Hinsdale**  
**22.6%**



**Colorado**  
**23.5%**

Source: BRFSS, SparkMap\*, 2019

**USA**

**32.1%**

Source: BRFSS, CDC, 2019

### Healthy People 2030

Baseline ..... **38.6%**

2013-2016

Target  **36%**

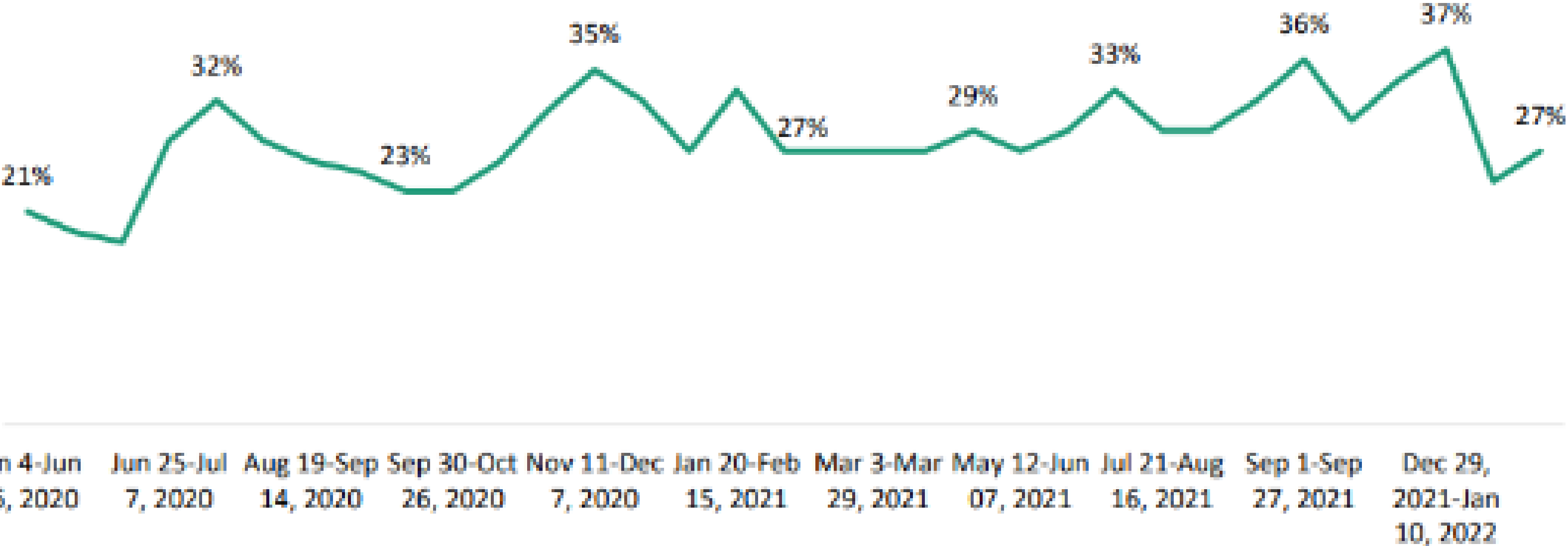
**Decrease  
desired**



At some points during the pandemic, nearly 2 in 5 households with children reported their kids weren't eating enough because food was unaffordable.



Colorado households with children where children were not eating enough because food was unaffordable, June 2020—March 2022



Source: Population Reference Bureau analysis of data from the U.S. Census Bureau. Household Pulse Survey. 2020-2022.



# Mortality

# Mortality

## Hinsdale County

### Top Leading Causes of Death



# Mortality

## Hinsdale County

### Top Leading Causes of Death

 **2** Malignant Neoplasms: 133 per 100,000 (95 % CI: 27.6, 318.1)

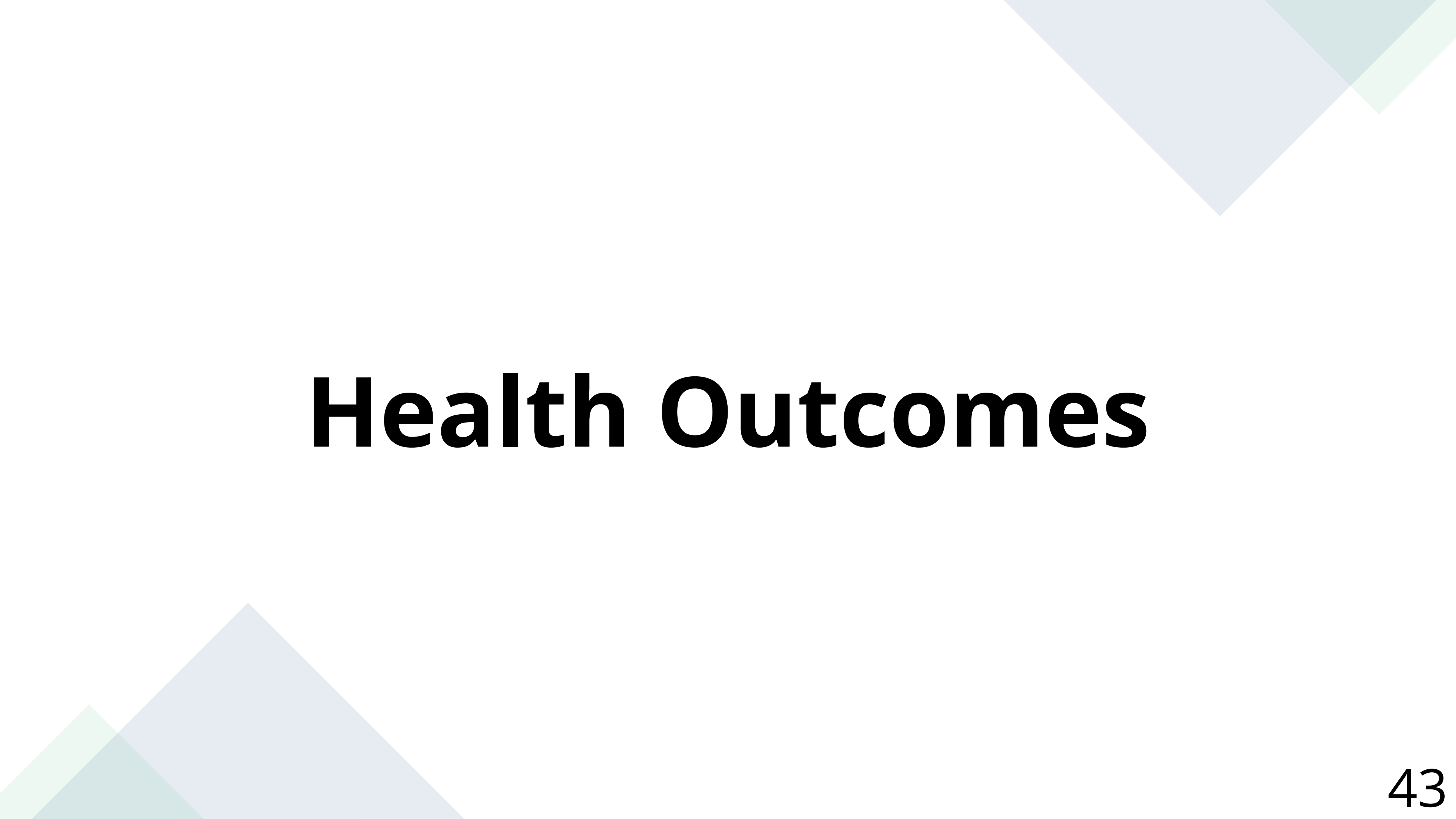
State: 125 per 100,000

95 % CI: 27.6, 318.1

US: 146 per 100,000

### Healthy People 2030



The page features decorative geometric shapes in the corners. In the top right, there are overlapping triangles in light blue and light green. In the bottom left, there are overlapping triangles in light green and light blue.

# Health Outcomes

# Hinsdale County

# Health Outcomes

## Age-adjusted Cancer Rates

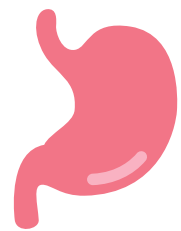
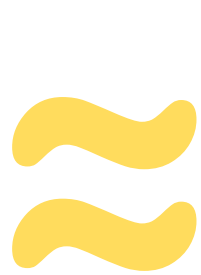
## All Cancer Site Cases (2009-2019)

Cancer Sites (2015-2019)

**340 per 100,000**

Similar to state  
69 per 100,000

95% CI: 67.67, 69.56



58

per 100,000

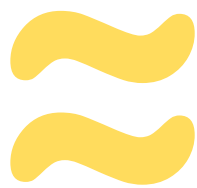
Digestive system Cancer

Case Rate

95% CI 7.11, 157.7

Higher than state  
24 per 100,000

95% CI: 23.05, 24.17

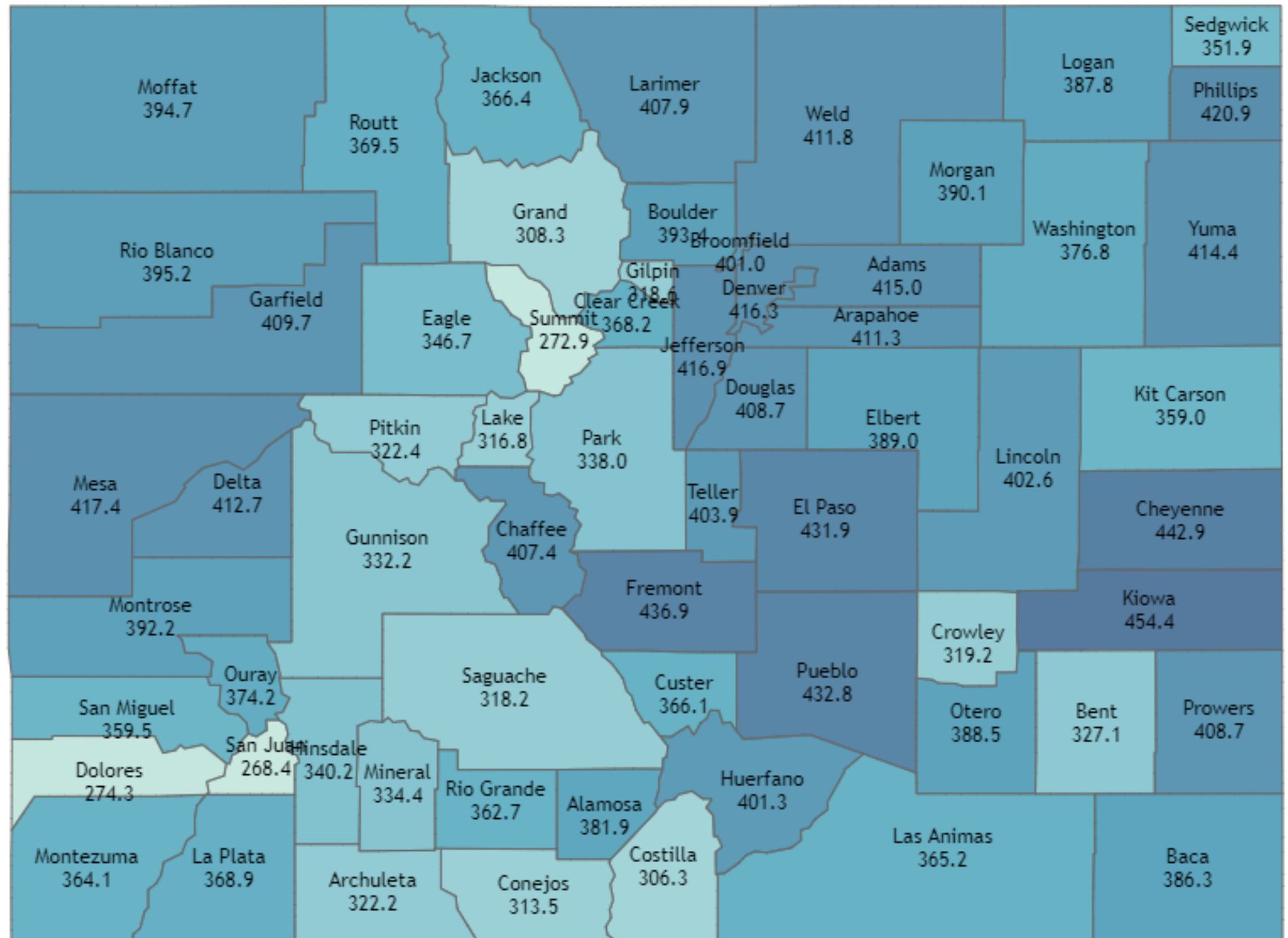


48

per 100,000

Skin Cancer Case Rate

95% CI 3.92, 140.9



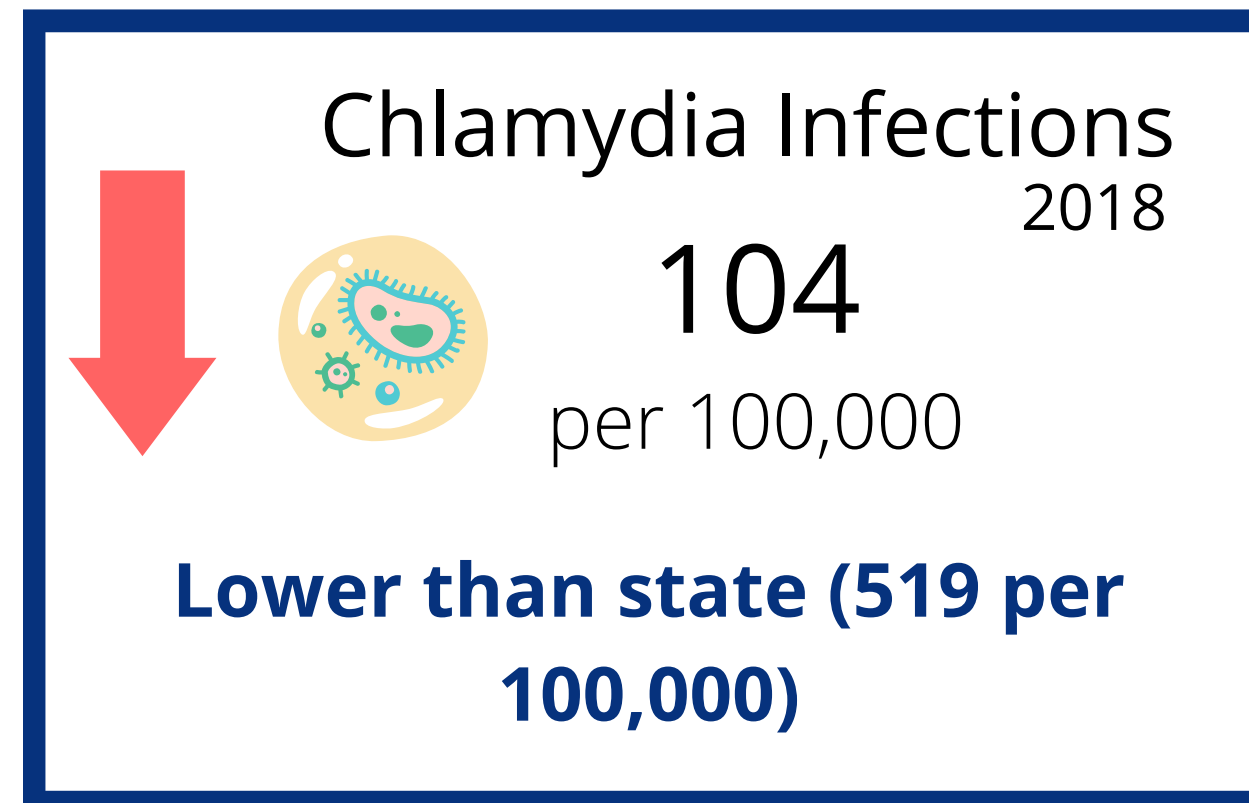
Source: Colorado Central Cancer Registry, COHID

# Health Outcomes

## Sexually Transmitted Diseases/Infections

(STD/STI Rates, 2018)

### Hinsdale County




The slide features decorative geometric shapes in the corners. In the top right, there are overlapping triangles in light blue and light green. In the bottom left, there are overlapping triangles in light green and light blue.

# Health Insurance

# Access to care Hinsdale County Insurance



 **12.8%** Adults without Health Insurance coverage

Similar to the state (10.8%)

**95% CI Hinsdale: 11, 14.6**    **95% CI CO: 10.4, 11.2**  
Source: Small Area Health Insurance Estimates, COHID

**13.3%** Working-age Adults eligible but not enrolled in Medicaid

State (12.1%)

Source: Colorado Health Institute, COHID

 **11%** Children without Health Insurance coverage

Higher than the state (5.7%)

**95% CI Hinsdale: 8.6, 13.4**    **95% CI CO: 5.2, 6.2**

Source: Small Area Health Insurance Estimates, COHID

**10.1%** Children eligible but not enrolled in Medicare or **CHP+**

State (6.3%)

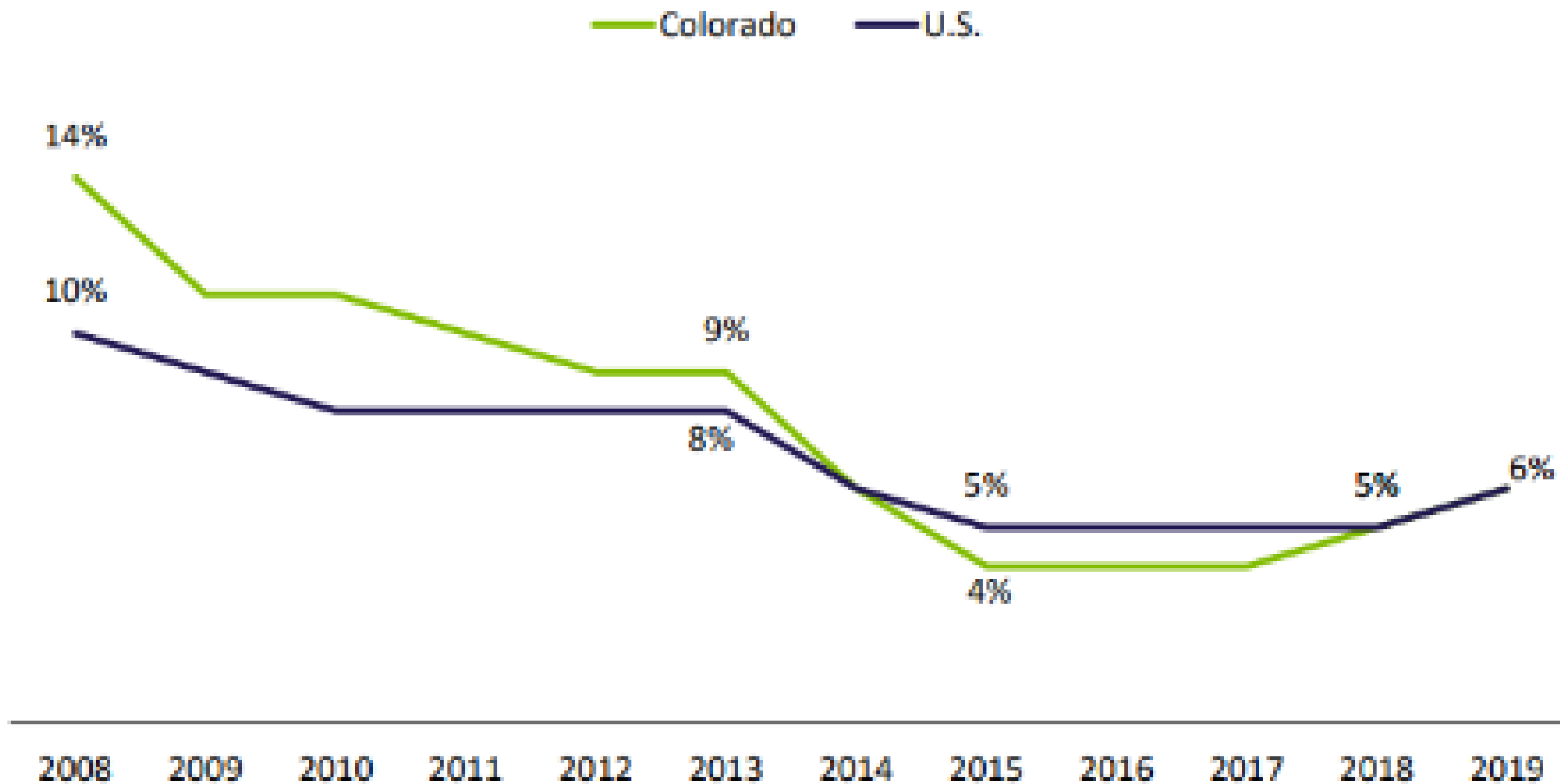
Source: Behavioral Risk Factor Surveillance System, COHID



## Colorado's important progress with reducing the child uninsured rate had stalled in the years before the pandemic



Children under 19 who were uninsured, 2008-2019



Source: U.S. Census Bureau, Health Insurance Historical Tables.

# Aging

# Aging in Place (Older Adult Health)

## Hinsdale County

### Percent with a disability

**29%**

65-74 years old

Count: 134

**75.5%**

75+ years old

Count: 69

State (22.7% and 47.5%)

Source: American Community Survey, US Census Bureau, 2015-2019

## Ambulatory Difficulty

65 and older



**29.5%**

State  
(18.2%)

Source: American Community Survey, US Census Bureau, 2015-2019

## Independent Living Difficulty

65 and older



**17.6%**

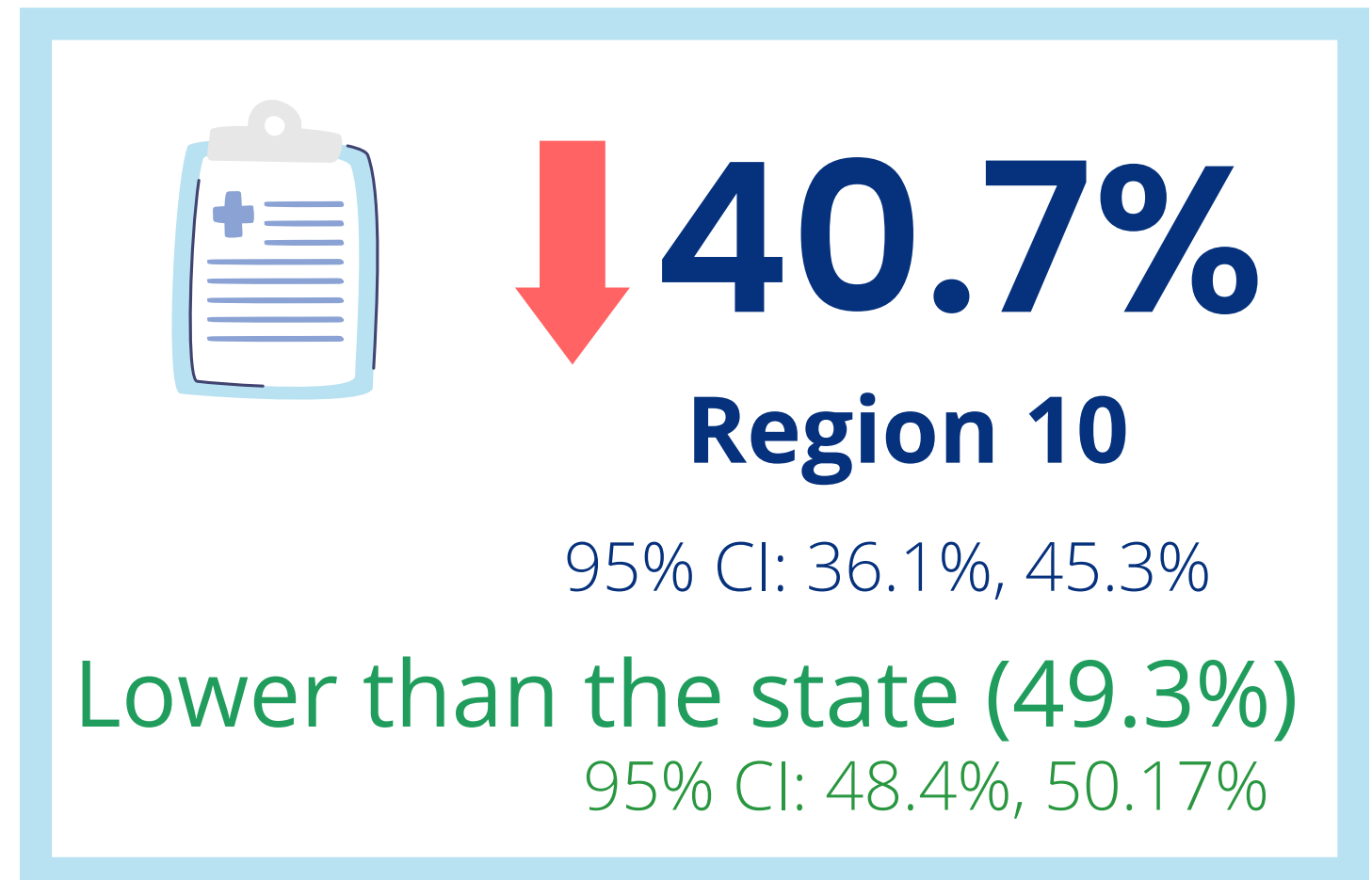
State  
(11.4%)

Source: American Community Survey, US Census Bureau, 2015-2019

# Aging in Place (Older Adult Health)

Up to date on a core set of preventative services

- ✓ Pneumococcal vaccine
- ✓ Flu vaccine in past year
- ✓ Mammogram in past 2 years (Females only)
- ✓ Fecal Occult Blood test (FOBT) in past year  
OR  
sigmoidoscopy in past 5 years and FOBT past 3 years





# Key Informant Interviews



# Community Health Assessment

Tri-County Health Community Health  
Assessment

Kids Count Data Center  
Kids Count Archive

# Next Steps

1

Finalize Survey,  
Finalize Key  
Informant  
Questions

2

Promote survey,  
Perform Key  
Informant  
Interviews

3

Use data and  
input from  
community to  
determine  
priorities

# Contact Information

Erika Stoerkel:  
[estoerkel@gunnisoncounty.org](mailto:estoerkel@gunnisoncounty.org)

Margaret Wacker:  
[mwacker@gunnisoncounty.org](mailto:mwacker@gunnisoncounty.org)

Tara Hardy  
[tara@silverthreadphd.org](mailto:tara@silverthreadphd.org)